



SECURING  
CONFIDENCE.  
OPENING  
POSSIBILITIES.



PRODUCT DIGEST

# Customer Support

## Customer Support

Our Customer Support team is available to answer questions or provide any assistance you may need.

717.656.4281, [help@pdqlocks.com](mailto:help@pdqlocks.com).  
Monday through Friday – 8am to 5pm EST.

## Placing Orders

To place orders, email:  
[orders@pdqlocks.com](mailto:orders@pdqlocks.com)

## Product and Technical Support

PDQ Mechanical: 833.273.7832, [support@pdqlocks.com](mailto:support@pdqlocks.com)

## Quotation and Product Cross Reference

[quotes@pdqlocks.com](mailto:quotes@pdqlocks.com), 717.656.4281

## Value Engineering Services (Complimentary)

[quotes@pdqlocks.com](mailto:quotes@pdqlocks.com), 717.656.4281

## Specification Writing Services (Complimentary)

[quotes@pdqlocks.com](mailto:quotes@pdqlocks.com), 717.656.4281

## World Headquarters Administrative Office U.S. Manufacturing Center

PDQ Manufacturing  
2230 Embassy Drive  
Lancaster, PA 17603 USA

## Remittances

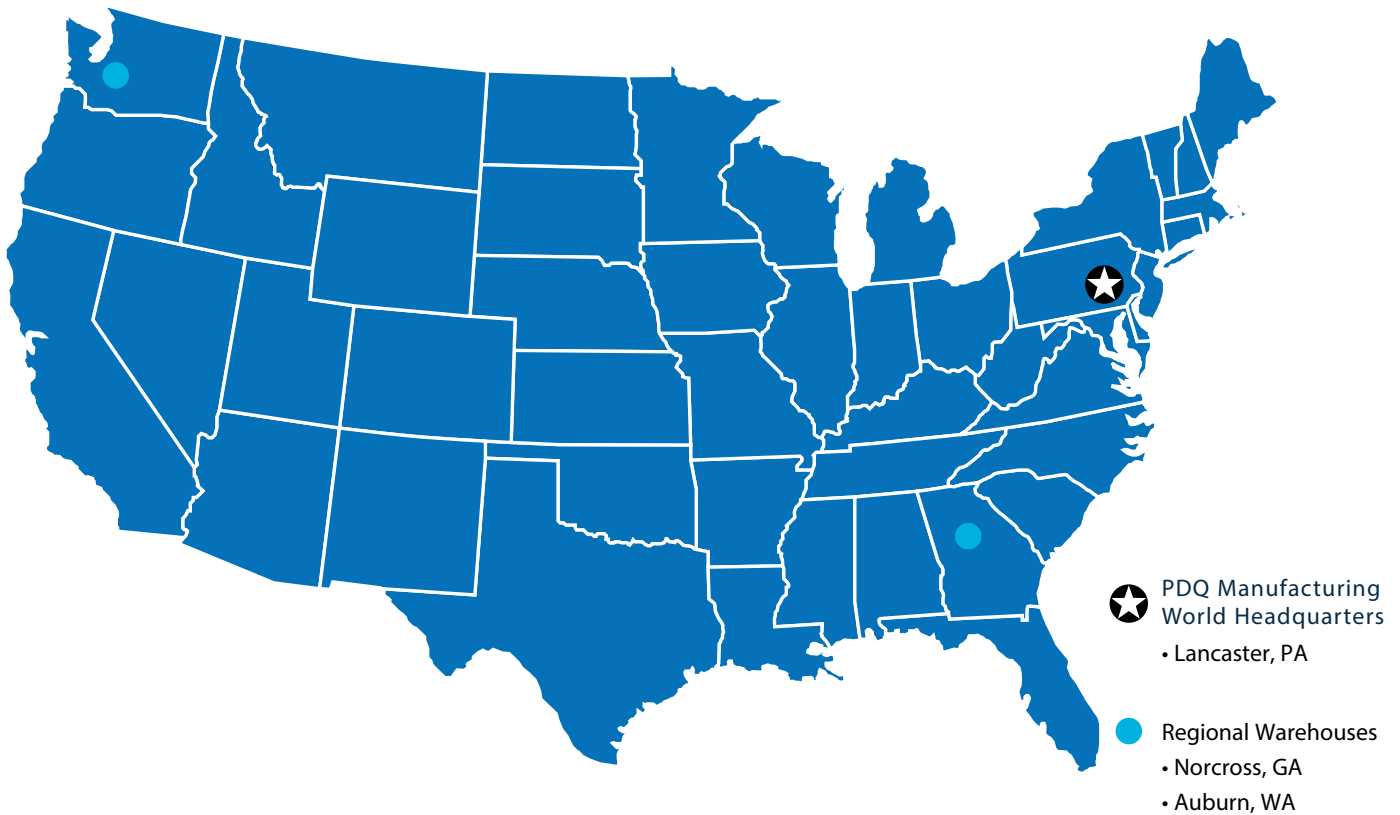
PDQ Manufacturing  
P.O. Box 6426  
Lancaster, PA 17607 USA

## Regional Distribution Centers

Lancaster, PA, Norcross, GA, Auburn, WA

## International Sales and Distribution Centers

Abu Dhabi, United Arab Emirates



★ PDQ Manufacturing  
World Headquarters  
• Lancaster, PA

● Regional Warehouses  
• Norcross, GA  
• Auburn, WA

# Table of Contents

About PDQ	4	6300/6400 Trim	48
<b>Mortise Locks</b>	<b>5</b>	63300/6400 Electrified Options & Accessories	49
MR Series Grade 1 Mortise	6	Delayed Egress	52
MR Series Grade 1 Electrified Mortise	8	4200 Exit Device	54
Trim and Levers	9	<b>Mullions</b>	<b>57</b>
<b>Tubular Locks</b>	<b>10</b>	9300 Series Mullion	57
TJ Series Tubular Trim Suite	10	<b>Door Closers</b>	<b>58</b>
<b>Cylindrical Locks Grade 1</b>	<b>11</b>	7100 Series Grade 1 Closer	59
XGT/GT199A Series Grade 1 Electrified Cylindrical	13	5300/5500 Series Grade 1 Closer	60
XGT/GT135LED Classroom Intruder	14	5100 Series Grade 1 Closer	61
XGT Series Grade 1 Cylindrical	15	3100 Series Grade 1 Closer	62
GT Series Grade 1 Cylindrical	16	SCS Spring Cushion Stop	63
SX Series Grade 1 Cylindrical	17	<b>Sliding Barn Door Hardware</b>	<b>64</b>
<b>Cylindrical Locks Grade 2</b>	<b>18</b>	STS Series Sliding Barn Door Hardware	64
GP Series Grade 2 Cylindrical	19	<b>Hinges</b>	<b>65</b>
SD Series Grade 2 Cylindrical	20	Commercial Hinges	65
SF Series Grade 2 Cylindrical	21	Electrified Hinges	68
CL Series Grade 2 Cylindrical	22	<b>Electrified Solutions</b>	<b>66</b>
SV Series Grade 2 Cylindrical	23	Key Switches & Push Buttons	68
<b>Electronic Locks</b>	<b>24</b>	Electric Strikes	69
KMS-Spirit Series	25	Wire Harness	70
CLS-Spirit Series	26	EPT100 ISMC Power Transfer	71
SDS-Spirit Series	27	Power Supplies	72
GTS-Spirit Series	28	<b>Flat Goods</b>	<b>73</b>
MRS-Spirit Series	29	Privacy Latch Guards	73
6EWS-Spirit Series	30	Flush and Surface Bolts	73
Spirit App	31	Coordinators	73
SDE Push Button Lock	32	Push Plates	73
<b>Deadbolts</b>	<b>33</b>	Pulls and Pull Plates	73
MJ Mortise Cylinder Deadbolt	34	Push and Push-Pull Bars	73
KT Series Heavy Duty Bored Deadbolt – Mortise Cylinder	35	Fasteners	73
KM Series Heavy Duty Bored Deadbolt – Rim Cylinder	36	Door Protection Plates	73
KV Series Commercial Duty Bored Deadbolt – Rim Cylinder	37	<b>General Hardware</b>	<b>74</b>
<b>Cylinders, Keying Systems and Keys</b>	<b>38</b>	Wall Stops and Holders	74
Cylinders & Cores	38	Floor Stops and Holders	74
Keying & Keyways	39	Kick Down Door Stops	74
<b>Padlocks</b>	<b>40</b>	Hinge Stops	74
PL Series Padlock	40	Roller Stops	74
<b>Exit Devices</b>	<b>43</b>	Roller Latches, Catches and Protectors	74
6300/6400R Rim	43	Hooks, Silencers, Door Viewers, Strikes	74
6300/6400V Surface Vertical Rod	44	<b>PDQ/SKILCRAFT AbilityOne Program</b>	<b>75</b>
6300/6400C Concealed Vertical Rod	45	Warranty	76
6300M Mortise	46	Levers	77
6300D Dummy	47	<b>Decorative Finish Collection</b>	<b>78</b>
		Architectural Finishes by Product Series	79
		Painted Finishes by Product Series	81
		<b>Customer Training Program</b>	<b>82</b>

# Headquarters and Manufacturing



## World Class Manufacturing and Design

- 80,000 Square Foot Facility
- Domestic Engineering, Design, and Product Development
- On-site Tool and Die Shop
- Intertek Certified Testing Facility (Continuous Process)
- Lean Manufacturing
- Six Sigma Process
- Value Stream Mapping
- Replenishment Flow Racks/Linear Assembly Line and Cells



## Designed to Over-Perform

Tested to 11 million cycles and still counting! That's how PDQ backs up its claim to manufacture some of the toughest hardware in the market. Our mortise locks are built to withstand the rigors of daily use without fail, keeping people and their assets safe while delivering consistent reliable performance. Easy to install, and simple to repair and maintain. That means fewer callbacks for you and total safety and security for your customers.

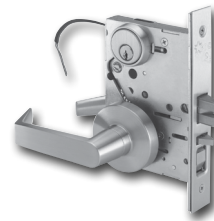
### MR Mechanical



#### Applications

Healthcare, K-12, higher education, offices, commercial buildings and government facilities.

### MR199A Electrified



#### Applications

Computer rooms, storage areas, child care facilities, restrooms, nursing staff lounges and stairwell towers.

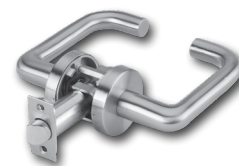
### MR Visual Indicators



#### Applications

Classroom security, student housing and traditional OCCUPIED/ VACANT and LOCKED/UNLOCKED applications.

### TJ Tubular Lock



#### Applications

Interior doors in high-end residential, multi-family and commercial spaces. Trim matches MR mortise achieving a coordinated look throughout the property.

## GRADE 1



## Top Performer in the Industry. Lifetime Warranty

- Versatile – Single cam for all locking functions
- Available in multiple escutcheon widths



ADA COMPLIANT



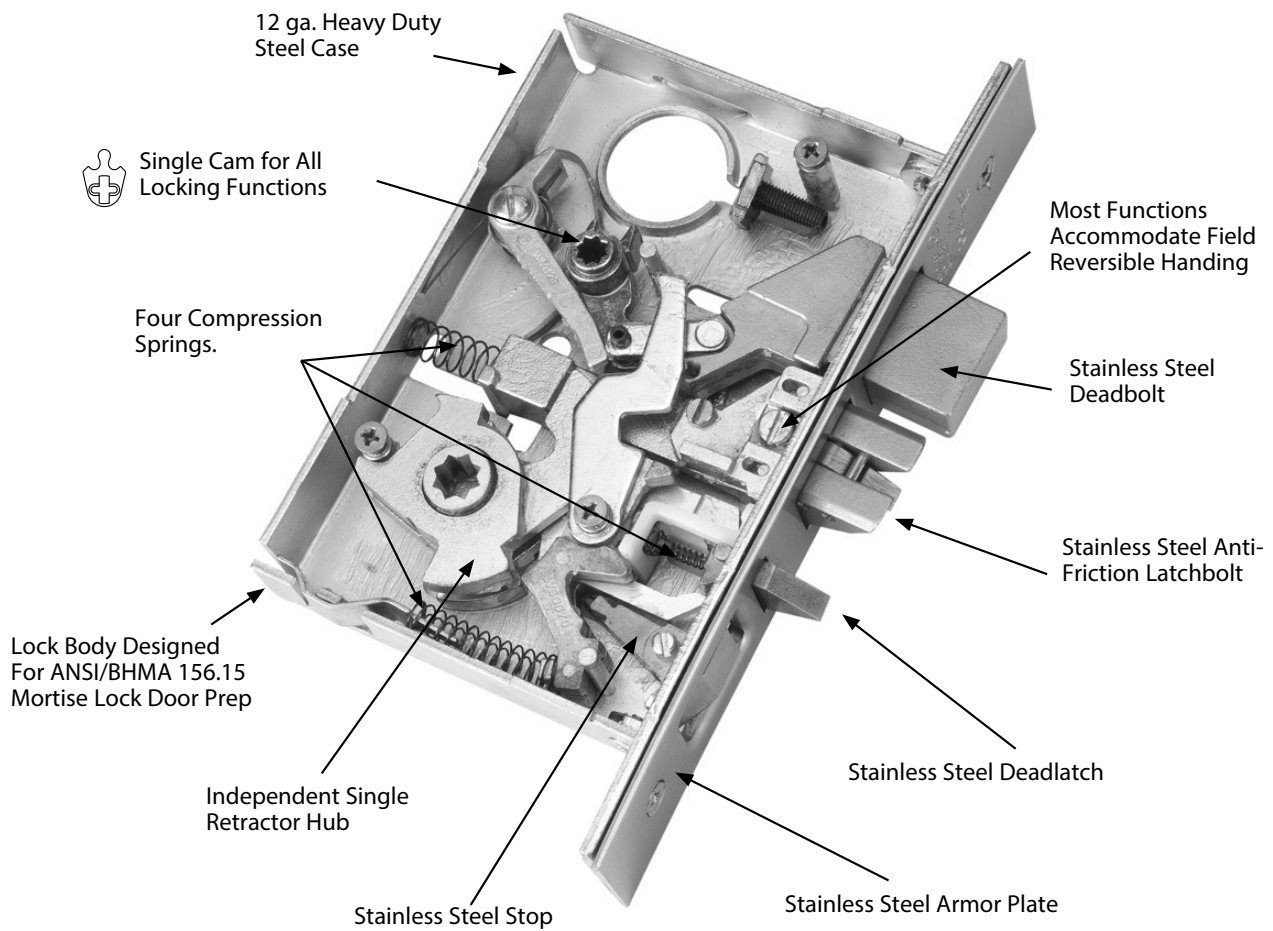
## Specifications

<b>FOR DOORS:</b>	• 1-3/4" standard, 2" - 3" special order from factory
<b>BACKSET:</b>	• 2-3/4"
<b>CASE:</b>	• 12-gauge cold rolled steel mechanism • Dichromated for corrosion resistance • Features weakened spindle design to prevent case damage
<b>ARMOR FRONT:</b>	• Beveled 1/8" on 2" • 625 (US26) & 630 (US32D) use stainless steel as base material, all other finishes use stainless steel or brass as base material
<b>STRIKE:</b>	• Non-handed Curved Lip Strike • 625 (US26) & 630 (US32D) use stainless steel as base material, all other finishes use stainless steel or brass as base material
<b>LEVERS:</b>	• F Series Sectional/Escutcheon: Philadelphia, Boston, Miami • J Standard and J Wide Trim: Philadelphia, Boston, Miami, Chicago, Dallas, Houston, Los Angeles, Memphis, Orlando, Ball Knob
<b>LATCHBOLT:</b>	• 3/4" Throw • Investment Cast Stainless Steel • Anti-friction
<b>DEADBOLT:</b>	• 1" Throw • Investment Cast Stainless Steel
<b>HAND:</b>	• Most functions field reversible. Specify handing for Strikes, consult factory for details
<b>TRIM:</b>	• F trim - forged brass levers and escutcheons • Round and square rose available • J Standard and J Wide Trim - stainless steel escutcheon and levers, PHL, MEM, MIA and BSN are solid levers LAX, ORL, DAL and CHI are tube levers
<b>KEYS:</b>	• Two (2) per Lock
<b>KEYWAYS:</b>	• SCC standard (Schlage C Compatible) • Also available in keyways of other manufacturers
<b>INTERCHANGEABLE CORE:</b>	• 6 or 7-pin • Compatible with Best, Falcon & Arrow • Large Format IC Cores compatible with Schlage.
<b>CYLINDER:</b>	• 6 or 7-pin Brass Mortise Cylinder • Standard High Security and UL437 Cylinders Available
<b>KEYING:</b>	• Options: MK, CMK or GMK • Zero Bitted (KO), Keyed Different (KD) or Keyed Alike (KA) Can be keyed into existing master key systems
<b>FINISHES:</b>	• F Series Trim: 626 (US26D) • J Standard and J Wide Trim: 605 (US3), 606 (US4), 612 (US10), 613E, 622 (US19), 629 (US32), 630 (US32D) • Antimicrobial Coating available on 626 (US26D) & 630 (US32D) for F, J, and J Wide Series
<b>PERFORMANCE:</b>	• Tested to over 11 million cycles, 11X ANSI/BHMA standard
<b>CERTIFICATIONS, LISTINGS, COMPLIANCES:</b>	• UL listed for 3 hrs, for single doors up to 40" x 80" • Certified to ANSI/BHMA 156.13 Operational Grade 1 and Security Grade 1 • Approved for Florida HVHZ (High Velocity Hurricane Zone). PDQ Product Approval: FL 21376. Design load rating: ± 70.0 PSF for single door (3' x 7') • Complies with ADA (Americans with Disabilities Act) and ICC/ANSI 117.1 for Accessible and Usable Buildings • J Wide Escutcheon Trim complies with Unified Facilities Guide Specification 08 71 00 (August 2008)
<b>WARRANTY:</b>	• Lifetime Limited Warranty
<b>COUNTRY OF ORIGIN:</b>	• Assembled in the U.S.A. with U.S. and foreign material. Meets requirements of the Buy American Act as a COTS product manufactured in the United States

Note: Heavy Duty Spindle for High Abuse situations is available for F trim.

‡ Available with antimicrobial coating, technology that is known to inhibit the growth of microbes.

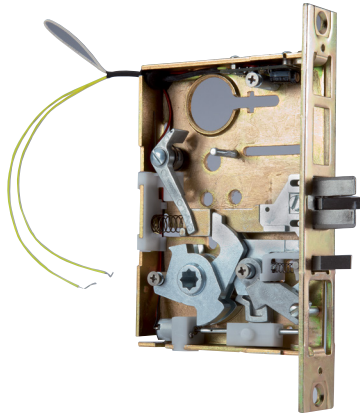
# Mortise Casing Features



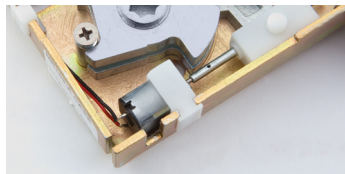
Typical Applications	
Assisted Living	Multi-family
Government Facilities	Offices
Healthcare	Public Buildings
Hospitality	Retail
Houses of Worship	Higher Education
Industrial	K-12 Education

## Flexible Design Accommodates Multiple Voltages

- Universal input voltage: 12/24V both AC and DC, out-of-the box
- FAIL SECURE/FAIL SAFE is field selectable
- Get the job done right on the first visit
- MR199A Electrified Storeroom
- MR200 Electrified Institutional



Innovative motor drive controls FAIL SECURE or FAIL SAFE locking mode.



### Typical Applications

- Child Care Facilities
- Computer Rooms
- Nursing Staff Lounges
- Rest Rooms
- Stairwell Towers
- Storage Areas

### Features

- Motorized locking/unlocking.
- FAIL SECURE (Factory Default) – Outside trim is UNLOCKED when power is ON, and LOCKED when power is OFF. Lockset will lock in the event of a power failure.
- FAIL SAFE – Outside trim is LOCKED when power is ON, and UNLOCKED when power is OFF. Lockset will unlock in the event of a power failure.
- Field changeable from FAIL Secure to FAIL SAFE.
- Built around PDQ's world class MR series mortise lock chassis platform.
- Meets requirements of the Buy American Act.
- SMARTSENSE™ control board automatically accepts AC or DC input voltage.
- Request to exit option.
- Latch bolt monitor option.
- Field reversible handing - consult factory.

## Specifications



<b>PERFORMANCE:</b>	<ul style="list-style-type: none"> <li>• Motor drive factory tested to over 1.4 million cycles (1.4 times the ANSI/BHMA grade 1 std)</li> </ul>
<b>RECOMMENDED POWER SUPPLY:</b>	<ul style="list-style-type: none"> <li>• PDQ Model # 81440                             <ul style="list-style-type: none"> <li>– Input: 120VAC, .9A, 50/60Hz 240VAC, .6A, 50/60Hz</li> <li>– Output: 24VDC, 2A, filtered and regulated</li> </ul> </li> <li>• Rated for simultaneous operation of 2ea mortise lock assemblies</li> <li>• Power Supply Requirements:                             <ul style="list-style-type: none"> <li>– AC/DC Output Voltage</li> <li>– 1A min (filtered and regulated)</li> </ul> </li> <li>• 12-24VDC @ &lt; 1A initial surge (1 sec), 5mA standby after 30 sec</li> <li>– AC Output Voltage</li> <li>• 12-24VAC (60Hz) @ &lt; 1A initial surge (1 sec), 15mA standby after 30 sec</li> </ul>
<b>ELECTRICAL SPECIFICATIONS:</b>	<ul style="list-style-type: none"> <li>• Input voltage: 12-24VDC or 12-24VAC</li> <li>• Max In-rush current: 1.0A</li> <li>• Standby current:                             <ul style="list-style-type: none"> <li>– 12VAC: 12mA</li> <li>– 24VAC: 10mA</li> <li>– 12VDC: 3mA</li> <li>– 24VDC: 5mA</li> </ul> </li> <li>Note: Operating voltage at ± 10% of rated voltage</li> </ul>
<b>CERTIFICATIONS, LISTINGS, COMPLIANCES:</b>	<ul style="list-style-type: none"> <li>• ANSI/UL10C and CAN/ULC-5104 Listed for "Fire Exit Hardware" up to 3 hours for 4'0" x 8'0" maximum single, 8'0" x 8'0" maximum pairs</li> <li>• Assembled in the U.S.A. with U.S. and foreign material. Meets requirements of the Buy American Act as a COTS product manufactured in the United States</li> </ul>
<b>WARRANTY:</b>	<ul style="list-style-type: none"> <li>• 2-Years</li> </ul>





## Escutcheon

### F Series Trim



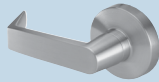
**F Trim**  
2-1/16" W x 7-5/8" H  
626 (US26D) Finish Only  
(Brass Escutcheon)

### J Series Trim

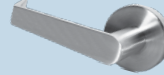


**J Trim**  
1-3/4" W x 7-5/8" H  
**J Wide Trim**  
2-9/16" W x 8" H  
7 Finishes (605, 606, 612, 613E, 622, 629, 630)  
Specify 630 in Lieu of 619  
(Stainless Steel Escutcheon)

## Sectional



**SF Trim**  
Round Rose  
(Brass)



**SJ Trim**  
Round Rose  
(Stainless Steel)



**SR Trim**  
Square Rose  
(Stainless Steel)

## Levers



**Philadelphia**



**Boston**



**Miami**

All Levers Brass



**Philadelphia**



**Boston**



**Miami**



**Chicago**



**Dallas**



**Los Angeles**



**Memphis**



**Orlando**



**Houston**



**Ball Knob**  
(Non-ADA)

All Levers Stainless Steel

## Finishes



605 (US3)  
Bright Brass  
\*F-Trim Only



606 (US4)  
Satin Brass



612 (US10)  
Satin Bronze



613E  
Dark Oxidized  
Satin Bronze  
(Equivalent)



622 (US19)  
Flat Black



626\* (US26D)  
Satin  
Chromium



629 (US32)  
Bright  
Stainless Steel



630 (US32D)  
Satin Stainless  
Steel

## Non-Keyed Companion to MR Mortise Lock

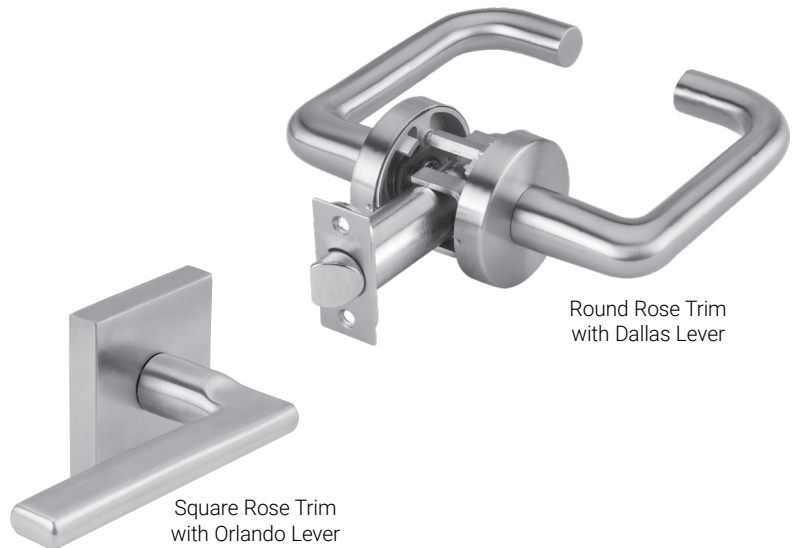
- Shares common high-end trim and levers with MR Mortise
- TJ/MR combination delivers a uniform look throughout apartment

### Features

- Contemporary decorative trim perfect for high end residential and office work
- Designed to compliment MR Series Mortise locks sharing the same sectional rose diameter and levers
- Investment cast stainless steel trim
- Range of lever styles available
- Available in round rose or square rose
- Uses a slender 1-3/8" diameter rose providing a clean contemporary look

### Typical Applications

- High-End Residential
- Multi-family
- Offices



## Specifications

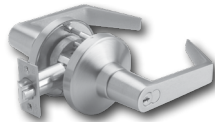


<b>FOR DOORS:</b>	• For doors 1-3/8" (35mm) to 1-3/4" (44mm) thick standard
<b>BACKSET:</b>	• 2-3/4" (70mm) default. Optional: 2-3/8" (60mm)
<b>STRIKE:</b>	• "Full Lip" strike default. "T" strike and ANSI/ASA strike optional
<b>ROSE DIMENSIONS:</b>	• Round Rose: 2-3/8" DIA • Square Rose: 2-9/16"
<b>DOOR PREP:</b>	• ANSI Standard 115.2, Type 161 for 2-3/4" Backset • Type 160 optional
<b>LATCH BOLTS:</b>	• 2-3/4" Backset has 1-1/8" faceplate. 2-3/8" Backset has a 1" faceplate filler
<b>HAND:</b>	• Non-handed, except Memphis and Orlando
<b>FINISHES:</b>	• 605 (US3) Bright Brass, 606 (US4) Satin Brass, 612 (US10) Satin Bronze, 613E Dark Oxidized Satin Bronze (Equivalent), 622 (US19) Flat Black, 629 (US32) Bright Stainless Steel, 630 (US32D) Satin Stainless Steel
<b>TRIM:</b>	• Stainless Steel Levers and Roses
<b>LEVER DESIGNS:</b>	• Philadelphia, Boston, Miami, Chicago, Houston, Memphis, Orlando, Los Angeles, Dallas and Ball Knob
<b>CERTIFICATIONS, LISTINGS, COMPLIANCES:</b>	• Complies with ADA (Americans with Disabilities Act) and ICC/ANSI 117.1 for Accessible and Usable Buildings
<b>WARRANTY:</b>	• Five (5) year limited warranty (except ball knob)

## More Duty Than You Can Handle

Most manufacturers' approach to lock design ends with simply meeting BHMA/ANSI standards but not PDQ. Our philosophy is to step out of the box and develop innovative designs that take our locks to the next level. We don't just meet the standard, we crush it. Our design doctrine delivers the confidence that locks are built to last, whether the application calls for resistance to high abuse or to millions of cycles of operation without any degradation in performance

### XGT/GT Mechanical



#### Applications

High traffic doors, areas subject to severe abuse, K-12, higher education, Healthcare, public buildings and retro-fit applications.

### XGT/GT199A Electrified



#### Applications

Stairwell towers, tenant spaces, pharmacies, computer rooms and high security areas.

### XGT/GT135LED School Security Solution



#### Applications

In K-12 and higher education, indicators are part of the overall security plan. The GT135LED Classroom Intruder lock is designed to allow a staff member to use the inside cylinder to lock the outside of the door. The Intruder function eliminates the need to open the door to check for a locked lever. Simply press the button on the lock and if the red LED lights up the outside lever in locked and secure. If the LED does not light up, the outside lever is unlocked.

### SX Ball Knob



#### Applications

High traffic areas, Healthcare and commercial buildings.

# XGT/GT SERIES

## Extraordinary Design. Amazing Performance.



### XGT Exclusive

Cast stainless steel spindle yields over 3,000 in-lbs lever torque resistance. No clutching or free wheeling necessary!



Anti-rotation through bolts at 6 and 12 o'clock (A)

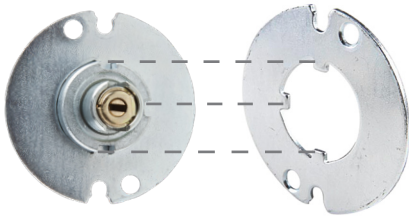
Cast alloy chassis



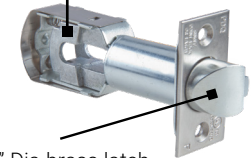
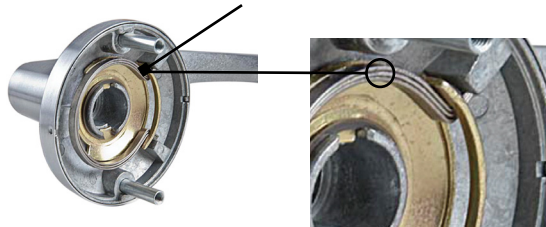
Vandal resistant heavy duty cast levers with Triple thick leaf spring helps eliminate lever sag

### 41 Degree Lever Rotation

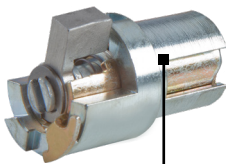
Reduced lever rotation results in less wear / longer life



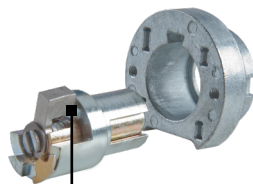
Heavy 13 gauge steel anti rotation plate is keyed to the chassis in 3 locations to resist the most extreme and abusive situations.



7/8" Dia brass latch bolt with 9/16" throw



Oversize stainless steel locking tip and billet steel drives torque rating



Thread lock patch(A) is standard on assembly and mounting fasteners keeps the lock body intact in the most challenging high use installations.

# XGT/ GT199A Series

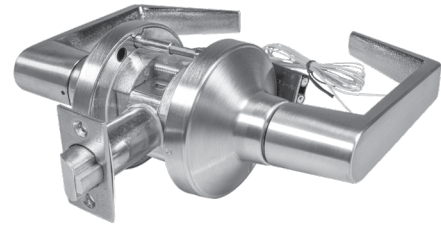
# Electrified Cylindrical Lock

BHMA GRADE 1



## Flexible Design Accommodates Multiple Voltages

- Universal input voltage: 12/24V both AC and DC, out-of-the box
- FAIL SECURE/FAIL SAFE is field selectable
- Get the job done right on the first visit



### Typical Applications

- Computer Rooms
- High Security Areas
- Pharmacies
- Stairwell Towers
- Tenant Spaces

## Specifications



<b>PERFORMANCE:</b>	<ul style="list-style-type: none"> <li>• Motor drive factory tested to over 1.4 million cycles (1.4 times the ANSI/BHMA grade 1 std)</li> </ul>
<b>RECOMMENDED POWER SUPPLY:</b>	<ul style="list-style-type: none"> <li>• PDQ Model # 81440.                             <ul style="list-style-type: none"> <li>– Input: 120VAC, .9A, 50/60Hz 240VAC, .6A, 50/60Hz</li> <li>– Output: 24VDC, 2A, filtered and regulated.</li> </ul> </li> <li>• Rated for simultaneous operation of 2ea mortise lock assemblies.</li> <li>• Power Supply Requirements:                             <ul style="list-style-type: none"> <li>– AC/DC Output Voltage</li> <li>– 1A min (filtered and regulated).</li> </ul> </li> <li>• 12-24VDC @ &lt; 1A initial surge (1 sec), 5mA standby after 30 sec.</li> <li>– AC Output Voltage.</li> <li>• 12-24VAC (60Hz) @ &lt; 1A initial surge (1 sec), 15mA standby after 30 sec</li> </ul>
<b>ELECTRICAL SPECIFICATIONS:</b>	<ul style="list-style-type: none"> <li>• Input voltage: 12-24VDC or 12-24VAC</li> <li>• Max In-rush current: 1.0A</li> <li>• Standby current:                             <ul style="list-style-type: none"> <li>– 12VAC: 12mA</li> <li>– 24VAC: 10mA</li> <li>– 12VDC: 3mA</li> <li>– 24VDC: 5mA</li> </ul> </li> </ul> <p>Note: Operating voltage at ± 10% of rated voltage</p>
<b>CERTIFICATIONS, LISTINGS, COMPLIANCES:</b>	<ul style="list-style-type: none"> <li>• ANSI/UL10C and CAN/ULC-5104 Listed for "Fire Exit Hardware" up to 3 hours for 4'0" x 8'0" maximum single, 8'0" x 8'0" maximum pairs</li> <li>• Assembled in the U.S.A. with U.S. and foreign material. Meets requirements of the Buy American Act as a COTS product manufactured in the United States</li> </ul>
<b>WARRANTY:</b>	<ul style="list-style-type: none"> <li>• 25-Years Mechanical / 2-Years Electronic</li> </ul>

### Trim/Levers



PHILADELPHIA – PHL



SFL



LFL



BOSTON – BSN



SFL



MIAMI – MIA



SFL

## GRADE 1

### Red Led Indicator Confirms the Door is Locked



Outside Lever Unlocked



To Check the Security of the Outside Lever, Press the Button. If the Red Led Lights Up, that Confirms the Outside Lever is Locked and Secure.

### Easy-to-Read LED Indicator Confirms the Door is Locked.

XGT/GT 135 LED Classroom Intruder Cylindrical Lock is designed to allow a staff member to use the inside cylinder to lock the outside of the door, without compromising safety to the occupants in the room. But how does a staff member know if the outside lever is locked?



Until now, it required opening the door and checking the lever. PDQ's 135 LED Classroom Intruder function eliminates the need to open the door. Simply press the button on the lock, and...if the Red LED lights up, the outside lever is locked and secure. If the Red LED does not light up, this indicates the outside lever is not locked and secure.

### Features



- Complies with California Education Code (Functions GT135, GT135LED, GT145)
- Red LED (Light Emitting Diode) outside lever status indicator.
- Pushing the button located on the rose of the inside lock, Red LED illuminates indicating the outside lever is locked.
- Offered with cylinder housings compatible with Best® Small Format Inter-changeable cores, Schlage® Large Format Interchangeable cores and most others.
- Large Format Inter-changeable cores only available with PHL lever.
- Keying options available, compatible with most key systems.
- Battery life rating: 10 years\*
- Battery type: CR1220
- Patented (US Patent #9,187,928)
- Factory tested to over 2 million cycles (2 times the ANSI/BHMA Grade 1 std)
- Lever torque tested to 2,100 in-lbs (3 times the ANSI/BHMA Grade 1 std)

### Status Indicator Locks

GT135LED

GT135

GT145

### Time Out Locks

GT173

### School Security Functions

Vestibule Class Room Security with LED Status Indicator

Vestibule Class Room Security without LED Status Indicator

Vestibule Class Room Security with Lock Directional Arrow (No LED Indicator)

Time Out Lock

# XGT SERIES

# Extra Heavy Duty Cylindrical Lock

GRADE 1



- Super Strong – Rigid locked lever – No free wheeling lever or clutch
- 41 Degree Lever Rotation – less wear/longer life, most ADA Compliant on the market



## Specifications

<b>FOR DOORS:</b>	• 1-3/4" to 2-1/4" thick • Preset for 1-3/4" door
<b>APPLICATION:</b>	• Through door thru-bolting
<b>DOOR PREP:</b>	• Standard ANSI A156.115 (161) for Cylindrical Locks
<b>BACKSET:</b>	• 2-3/4" Standard. 3-3/4" and 5" Optional (Ordered from factory only) • Heavy duty diecast, investment cast, chromated cold rolled steel and stainless steel mechanism. Billet Steel spindles for locking functions
<b>FRONT:</b>	• 2-1/4" x 1-1/8" • Stainless Steel or Wrought Brass • Beveled 1/8" in 2"
<b>STRIKE:</b>	• ASA standard • T-Strike or Full Lip Strike optional • Stainless Steel or Wrought Brass
<b>LEVERS:</b>	• Philadelphia (SFL and LFL), Boston (SFL), Miami (SFL)
<b>ROSE:</b>	• 3-3/8" DIA Wrought
<b>LATCHBOLT:</b>	• 9/16" Throw Deadlocking
<b>HAND:</b>	• Non-handed
<b>TRIM:</b>	• Solid diecast PHL, BSN or MIA Levers • 41° Lever Rotation Standard with 2-3/4" Backset • Wrought Brass Roses, Concealed Screws • 65° Lever Rotation Standard with 3/4" latch for double doors (Ordered from factory only) and all 2-3/8", 3-3/4" and 5" Backsets (Ordered from factory only)
<b>KEYS:</b>	• Two (2) per Lock
<b>KEYWAYS:</b>	• SCC standard (Schlage C Compatible) • Also available in keyways of other manufacturers
<b>INTERCHANGEABLE CORE:</b>	• Available for all keyed functions • 6 or 7-pin • Large Format IC Core available for PHL Lever ONLY • Compatible with Best, Falcon and Arrow small format IC cores
<b>CYLINDER:</b>	• 6-pin Brass Insert Cylinder keyed to 5-pins • Standard High Security and UL437 Cylinders Available
<b>KEYING:</b>	• Options: MK, CMK or GMK • Zero Bitted (KO), Keyed Different (KD) or Keyed Alike (KA) Can be keyed into existing master key systems
<b>FINISHES:</b>	• 605 (US3), 606 (US4), 612 (US10), 613E, 619 (US15), 622 (US19), 625 (US26), 626 (US26D) • Optional Antimicrobial Coating 626 (USD26D) only†
<b>CERTIFICATIONS, LISTINGS, COMPLIANCES:</b>	• UL listed for 3 hrs, for single doors up to 4'0" x 8'0" • Certified to ANSI/BHMA A156.2, Grade 1 • California Education Code Compliant (Functions XGT135, XGT135LED, XGT145) • Federal Specification FF-H-10C (Superseded by A156.2) • Approved for Florida HVHZ (High Velocity Hurricane Zone). PDQ Product Approval: FL 21376 Design load rating: ± 70.0 PSF for single door (3' x 7') • Complies with ADA (Americans with Disabilities Act) and ICC/ANSI 117.1 for Accessible and Usable Buildings
<b>WARRANTY:</b>	• Limited Lifetime Warranty
<b>COUNTRY OF ORIGIN:</b>	• Proudly Assembled in the U.S.A. with U.S. and foreign material. Meets requirements of the Buy American Act as a COTS product manufactured in the United States

† Available with antimicrobial powder coating, treated with silver ionic technology that is known to inhibit the growth of microbes.

## Trim/Levers

ALL LEVERS



## GRADE 1



- Super Strong – Rigid locked lever  
No free wheeling lever or clutch
- 41 Degree Lever Rotation – less wear/longer life,  
most ADA Compliant on the market



## Specifications

<b>FOR DOORS:</b>	• 1-3/4" to 2-1/4" thick • Preset for 1-3/4" door
<b>APPLICATION:</b>	• Through door thru-bolting
<b>DOOR PREP:</b>	• Standard ANSI A156.115 (161) for Cylindrical Locks
<b>BACKSET:</b>	• 2-3/4" Standard. 3-3/4" and 5" Optional (Ordered from factory only)
<b>CHASSIS:</b>	• Heavy duty diecast, investment cast, chromated cold rolled steel and stainless steel mechanism. Billet Steel spindles for locking functions
<b>FRONT:</b>	• 2-1/4" x 1-1/8" • Stainless Steel or Wrought Brass • Beveled 1/8" in 2"
<b>STRIKE:</b>	• ASA standard • T-Strike or Full Lip Strike optional • Stainless Steel or Wrought Brass
<b>LEVERS:</b>	• Philadelphia, Boston, Miami
<b>ROSE:</b>	• 3-3/8" DIA Wrought
<b>LATCHBOLT:</b>	• 9/16" Throw Deadlocking
<b>HAND:</b>	• Non-handed
<b>TRIM:</b>	• Solid diecast PHL, BSN or MIA Levers • 41° Lever Rotation Standard with 2-3/4" Backset • Wrought Brass Roses, Concealed Screws • 65° Lever Rotation Standard with 3/4" latch for double doors (Ordered from factory only) and all 2-3/8", 3-3/4" and 5" Backsets (Ordered from factory only)
<b>KEYS:</b>	• Two (2) per Lock
<b>KEYWAYS:</b>	• SCC standard (Schlage C Compatible) • Also available in keyways of other manufacturers
<b>INTERCHANGEABLE CORE:</b>	• Available for all keyed functions • 6 or 7-pin • Large Format IC Core available for PHL Lever ONLY • Compatible with Best, Falcon and Arrow small format IC cores
<b>CYLINDER:</b>	• 6-pin Brass Insert Cylinder keyed to 5-pins • Standard High Security and UL437 Cylinders Available
<b>KEYING:</b>	• Options: MK, CMK or GMK • Zero Bitted (KO), Keyed Different (KD) or Keyed Alike (KA) Can be keyed into existing master key systems
<b>FINISHES:</b>	• 605 (US3), 606 (US4), 612 (US10), 613E, 619 (US15), 622 (US19), 625 (US26), 626 (US26D) • Optional Antimicrobial Coating 626 (USD26D) only‡
<b>CERTIFICATIONS, LISTINGS, COMPLIANCES:</b>	• UL listed for 3 hrs, for single doors up to 4'0" x 8'0" • Certified to ANSI/BHMA A156.2, Grade 1 • California Education Code Compliant (Functions GT135, GT135LED, GT145) • Federal Specification FF-H-10C (Superseded by A156.2) • Approved for Florida HVHZ (High Velocity Hurricane Zone). PDQ Product Approval: FL 21376 Design load rating: ± 70.0 PSF for single door (3' x 7') • Complies with ADA (Americans with Disabilities Act) and ICC/ANSI 117.1 for Accessible and Usable Buildings
<b>WARRANTY:</b>	• Twenty-five (25) year Limited Warranty
<b>COUNTRY OF ORIGIN:</b>	• Proudly Assembled in the U.S.A. with U.S. and foreign material. Meets requirements of the Buy American Act as a COTS product manufactured in the United States

‡ Available with antimicrobial powder coating, treated with silver ionic technology that is known to inhibit the growth of microbes.

### Trim/Levers



**ALL LEVERS**



PHILADELPHIA – PHL



SFL



LFL



BOSTON – BSN



SFL



MIAMI – MIA



SFL



## GRADE 1

### Typical Applications

- Apartments
- Back-of-House Hotel/Motel
- Commercial Buildings
- Government Buildings
- High Traffic Areas
- Healthcare
- Houses of Worship
- Military Barracks
- Retail Backroom
- Retrofit/Repair/Replacement

### Features

- UL listed for 3-hour fire door
- Exceeds ANSI/BHMA A156.2 Grade 1
- 5 standard functions
- Various strike and latch options to accommodate any opening
- Available in keyways of most major manufacturers
- Tactile abrasive coating option
- Antimicrobial coating option
- Five (5) year limited warranty

### Designed for Robust Applications



### Specifications

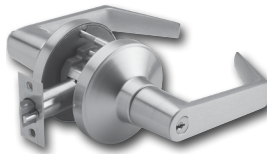
<b>FOR DOORS:</b>	• 1-3/8" to 2" thick
<b>DOOR PREP:</b>	• Fits Standard 160 or 161 Door Prep
<b>BACKSET:</b>	• 2-3/8", 2-3/4", 3-3/4", 5"
<b>CASE:</b>	• Steel, Yellow Chromate Plate
<b>FRONT:</b>	• 2-1/4" x 1-1/8" or 2-1/4" x 1" • Stainless Steel or Wrought Bronze
<b>STRIKE:</b>	• 4-7/8" x 1-1/4" (ASA). "T" or "FL" Strike Optional • Stainless Steel or Wrought Bronze
<b>UL F LATCHBOLT:</b>	• 3 hours of fire testing qualified, stainless steel latch bolt
<b>ROSE:</b>	• 3" DIA Wrought
<b>HAND:</b>	• Non-handed
<b>TRIM:</b>	• CQ ball knob. Stainless steel or wrought brass
<b>KEYWAYS:</b>	• Available in keyways of most major manufacturers
<b>CYLINDER:</b>	• Supplied standard to accommodate SFIC core. (Cylinder not included) • Standard High Security and UL437 Cylinders Available
<b>KEYING:</b>	• Standard core is available and can be MK, CMK, GMK, or CK. Available Zero Bitted (KO), Keyed Different (KD), Keyed Alike (KA). Can be keyed into existing masterkey systems of other manufacturers
<b>FINISHES:</b>	• 630 (US32D)
<b>WARRANTY:</b>	• Five (5) Year Limited Warranty
<b>CERTIFICATIONS, LISTINGS, COMPLIANCES:</b>	• Meets ANSI/BHMA A156.2-2003 Grade 1, surpassed 800,000 cycles • UL/CUL 10C listed for 3 hrs, for single doors up to 4'0" x 8'0" • TAA compliant. Country of origin: Taiwan

‡ Available with antimicrobial coating, technology that is known to inhibit the growth of microbes.

## Durability and Reliability

PDQ's Grade 2 mechanical lock offering includes a range of features, functions, and styles as well as a commitment to deliver durability, convenience, and unmatched value for a wide range of projects and applications.

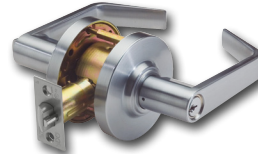
### GP Mechanical



#### Applications

Heavy-duty performance for high-traffic interior and exterior applications including offices, hospitality, assisted living, church, and other high/medium duty commercial applications. Strong like an ox, over 3x BHMA abusive lever torque test standard.

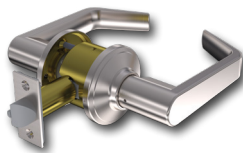
### SD Mechanical



#### Applications

Built to offer tough and reliable performance at a competitive price. Applications include multi-family, offices, hospitality, assisted living, and other standard duty commercial applications.

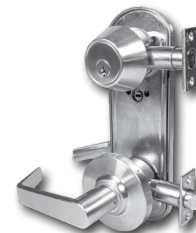
### SF Mechanical



#### Applications

Built to offer tough and reliable performance at a competitive price. Applications include multi-family, offices, hospitality, assisted living, and other standard duty commercial applications.

### CL Interconnected



#### Applications

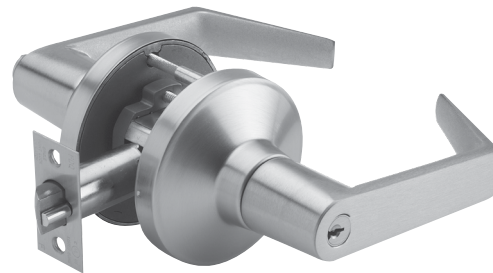
Offers the security of a deadbolt and lever combined in one product. Applications include hospitality, assisted living, multi-family, offices and retail.

## Grade 1 Strength at a Grade 2 Price

- Super Strong – Rigid locked lever – No free wheeling lever or clutch
- Versatile – Trim matches XGT/GT Grade 1 locks

### Typical Applications

- Government Facilities
- Healthcare
- Higher Education
- Hospitality
- Houses of Worship
- Industrial
- K-12 Education
- Multi-family
- Offices
- Public Buildings



### Specifications

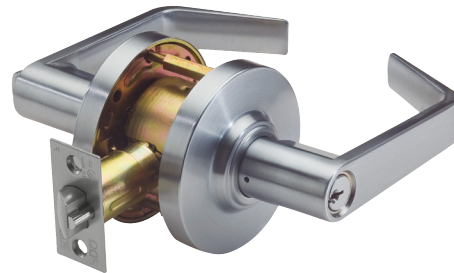
<b>FOR DOORS:</b>	• 1-3/8" to 1-3/4" thick • Preset for 1-3/4" door
<b>APPLICATION:</b>	• Through door thru-bolting • Fits 160 and 161 Door prep
<b>BACKSET:</b>	• 2-3/4" standard • 2-3/8", 5" optional
<b>CHASSIS:</b>	• Heavy duty diecast, investment cast, cold rolled steel, stainless steel mechanism
<b>FRONT:</b>	• 2-1/4" x 1-1/8" or 2-1/4" x 1" • Stainless Steel or Wrought Brass • Beveled 1/8" on 2"
<b>STRIKE:</b>	• ASA standard • Stainless Steel or Wrought Brass • T-Strike or Full Lip Strike optional
<b>LEVERS:</b>	• Philadelphia, Boston, Miami
<b>ROSE:</b>	• 3-3/8" DIA Wrought
<b>LATCHBOLT:</b>	• 1/2" Throw
<b>HAND:</b>	• Non-handed
<b>TRIM:</b>	• Solid diecast PHL, BSN or MIA Levers • 65° Lever Rotation • Wrought Brass Roses • Concealed Screws
<b>KEYS:</b>	• Two (2) per Lock
<b>KEYWAYS:</b>	• SCC standard (Schlage C Compatible) • Compatible with Best, Falcon and Arrow small format IC cores
<b>INTERCHANGEABLE CORE:</b>	• Available for all keyed functions • Large Format IC Core available for PHL Lever ONLY. For other lever shapes, contact PDQ Customer Service • 6 or 7-pin • Compatible with Best, Falcon & Arrow
<b>CYLINDER:</b>	• 6-pin Brass Insert Cylinder keyed to 5-pins • Standard High Security and UL437 Cylinders Available
<b>KEYING:</b>	• Options: MK, CMK or GMK • Zero Bitted (KO), Keyed Different (KD) or Keyed Alike (KA) Can be keyed into existing master key systems
<b>FINISHES:</b>	• 605 (US3), 606 (US4), 612 (US10), 613E, 619 (US15), 622 (US19), 625 (US26), 626 (US26D) • Optional Antimicrobial Coating with 626 finish only
<b>CERTIFICATIONS, LISTINGS, COMPLIANCES:</b>	• UL listed for 3 hrs, for single doors up to 4'0" x 8'0" • Certified to ANSI/BHMA 156.2, Grade 2 • Complies with ADA (Americans with Disabilities Act) and ICC/ANSI 117.1 for Accessible and Usable Buildings
<b>WARRANTY:</b>	• Eight (8) Year Limited Warranty
<b>COUNTRY OF ORIGIN:</b>	• Assembled in the U.S.A. with U.S. and foreign material • Meets requirements of the Buy American Act as a COTS product manufactured in the United States

‡ Available with antimicrobial coating, technology that is known to inhibit the growth of microbes.

## GRADE 2

### Most Valuable Grade 2 on the Market

- 8 Functions, more than most other Grade 2 locks
- Removable through bolts make for easy installation
- Designer lever and finish styles plus a 5-Year Warranty



### Typical Applications

- Assisted Living
- Hospitality
- Houses of Worship
- Industrial
- Medium/Light Commercial Installations
- Multi-family
- Offices
- Retail

### Specifications



<b>FOR DOORS:</b>	• 1-3/8" to 1-3/4" thick • Preset for 1-3/4" door
<b>APPLICATION:</b>	• Through door thru-bolting • Fits standard 160 and 161 Door prep • Thru-Bolts are removable
<b>BACKSET:</b>	• 2-3/4" standard • 2-3/8", 3-3/4", 5" optional
<b>CHASSIS:</b>	• Heavy-gauge cold rolled steel mechanism • Dichromated for corrosion resistance
<b>FRONT:</b>	• 2-1/4" x 1-1/8" or 2-1/4" x 1" • Beveled 1/8" on 2" • Stainless Steel or Wrought Brass
<b>STRIKE:</b>	• ASA standard • T-Strike or Full Lip Strike optional • Stainless Steel or Wrought Brass
<b>LEVERS:</b>	• Philadelphia, Boston, Miami, Memphis, Orlando
<b>ROSE:</b>	• 3-3/8" DIA Wrought
<b>LATCHBOLT:</b>	• 1/2" Throw
<b>HAND:</b>	• Non-handed (Except Memphis)
<b>TRIM:</b>	• Solid diecast PHL, BSN, MIA, MEM and ORL Levers • Wrought Brass Roses • Concealed Screws
<b>KEYS:</b>	• Two (2) per Lock
<b>KEYWAYS:</b>	• SCC standard (Schlage C Compatible) • Also available in keyways of other manufacturers
<b>INTERCHANGEABLE CORE:</b>	• 6 or 7-pin • Compatible with Best, Falcon & Arrow. Not available with Memphis lever
<b>CYLINDER:</b>	• 6-pin Brass Insert Cylinder keyed to 5-pins • Standard High Security and UL437 Cylinders Available
<b>KEYING:</b>	• Options: MK, CMK or GMK / Zero Bitted (KO), Keyed Different (KD) or Keyed Alike (KA) • Can be keyed into existing master key systems
<b>FINISHES:</b>	• 605 (US3), 613E, 622 (US19), 622 (19D), 626 (US26D)
<b>CERTIFICATIONS, LISTINGS, COMPLIANCES:</b>	• UL listed for 3 hrs, for single doors up to 4'0" x 8'0" • Certified to ANSI/BHMA A156.2 Grade 2 • Complies with ADA (Americans with Disabilities Act) and ICC/ANSI 117.1 for Accessible and Usable Buildings • TAA compliant. Country of origin: KR
<b>WARRANTY:</b>	• Five (5) year Limited Warranty

‡ Available with antimicrobial coating, technology that is known to inhibit the growth of microbes.

## GRADE 2

### Reliable Security for Multi-Family, Multi-Tenant and Light Commercial Applications.

- 5 functions - Privacy, Passage, Entrance Storeroom plus Single Dummy
- Heavier duty cylindrical lock is more durable than a tubular lock
- 5 designer levers to choose from
- 7 architectural finishes
- Stylish 2-9/16" round rose and 2-15/16" square rose
- Retrofits all major manufacturer's door preps
- Adjustable 2-3/8" - 2-3/4" backset latch is standard.
- Optional fixed backset latch adds fire label and BHMA certification.
- Conventional and SFIC core cylinders.
- Anti-lockout kick-off feature (Privacy)
- Suitable for doors 1-3/8" - 1-3/4" thick
- Shares common levers with SD Cylindrical and CL Interconnected locks.
- Mix and match for a uniform look.



### Typical Applications

- Assisted Living
- Hospitality
- Houses of Worship
- Industrial
- Medium/Light Commercial Installations
- Multi-family
- Offices
- Retail



ADA COMPLIANT

### Specifications

<b>FOR DOORS:</b>	• 1-3/8" to 1-3/4" thick • Preset for 1-3/4" door
<b>APPLICATION:</b>	• Fits standard 160 and 161 door prep • No additional thru-bolt
<b>BACKSET:</b>	• Adjustable - 2-3/8" - 2-3/4" (Optional UL Listed fire latch has fixed backsets, 2-3/8" or 2-3/4")
<b>CHASSIS:</b>	• Heavy-gauge cold rolled steel mechanism • Dichromated for corrosion resistance
<b>FRONT:</b>	• 1" face width, 1/4" radius with square corner filler for 1-1/8" width
<b>STRIKE:</b>	• Full Lip Strike standard, ASA and T-Strike optional
<b>LEVERS:</b>	• Philadelphia, Boston, Miami, Memphis and Orlando
<b>ROSE:</b>	• 2-9/16" Diameter Round Rose, 2-15/16" Square Rose
<b>LATCHBOLT:</b>	• Adjustable - 2-3/8" - 2-3/4" latch standard, Optional UL fire-rated 2-3/4" or 2-3/8" fixed latchbolts are available
<b>HAND:</b>	• Non-handed, for Memphis, swap levers to rehand
<b>TRIM:</b>	• Solid diecast PHL, BSN, MIA, MEM and ORL levers • Wrought brass roses • Concealed screws
<b>KEYS:</b>	• Two (2) per Lock
<b>KEYWAYS:</b>	• SCC standard (Schlage C Compatible) • Also available in keyways of other manufacturers
<b>INTERCHANGEABLE CORE:</b>	• 6 or 7-pin • Compatible with Best, Falcon & Arrow. Not available with Memphis lever
<b>CYLINDER:</b>	• 6-pin Brass Insert Cylinder keyed to 5-pins • Standard High Security and UL437 Cylinders Available
<b>KEYING:</b>	• Options: MK, CMK or GMK / Zero Bitted (KO), Keyed Different (KD) or Keyed Alike (KA) • Can be keyed into existing master key systems
<b>FINISHES:</b>	• 605 (US3), 606 (US4), 613E, 619 (US15), 622 (US19), 625 (US26), 626 (US26D)
<b>CERTIFICATIONS, LISTINGS, COMPLIANCES:</b>	<ul style="list-style-type: none"> <li>• Entry function and optional fixed backset latch only <ul style="list-style-type: none"> <li>- Certified to ANSI/BHMA 156.2, Grade 2 (fixed backset latch only)</li> <li>- UL listed for single doors up to 4'0" x 8'0" when ordered with UL latchbolt, contact factory for details</li> </ul> </li> <li>• TAA compliant. Country of origin: KR</li> <li>• Complies with ADA (Americans with Disabilities Act) and ICC/ANSI 117.1 for Accessible and Usable Buildings</li> </ul>
<b>WARRANTY:</b>	• Three (3) year Limited Warranty

## GRADE 2

### Security of a Deadbolt and Lever in One Assembly

- Field selectable prep – 4" and 5-1/2" hole centers
- CL and SD cylindricals share common levers.  
Match them for entry and interior doors to achieve a coordinated look.

#### Typical Applications

- Assisted Living
- Hospitality
- Military Housing
- Multi-family
- Offices
- Retail



ADA COMPLIANT

### Specifications

<b>FOR DOORS:</b>	• 1-3/8" and 1-3/4" thick
<b>PREPARATION:</b>	• ANSI/BHMA A156.115 for 4" and 5-1/2" hole centers, field selectable
<b>DUST BOX:</b>	• Included for Latchbolt and Deadbolt
<b>LATCHBOLT BACKSET:</b>	• 2-3/8" or 2-3/4" (Default). Specify when ordering
<b>DEADBOLT BACKSET:</b>	• Field adjustable for 2-3/8" and 2-3/4" (Default)
<b>STRIKE:</b>	• "T"-Strike (Default) • ASA or Full-Lip optional
<b>LEVERS:</b>	• Boston, Miami, Memphis, Orlando, Philadelphia
<b>ROSE:</b>	• 2-3/8" Round Rose, 2-15/16" Square Rose
<b>INSIDE ESCUTCHEON:</b>	• 3-3/4"W x 9-3/4"H (Wrought)
<b>LATCHBOLT:</b>	• 1/2" Throw
<b>DEADBOLT:</b>	• ADA compliant
<b>HANDING:</b>	• Non-handed (Except for Memphis Lever)
<b>KEYS:</b>	• Two (2) per Lock
<b>KEYWAYS:</b>	• SCC Default (Schlage C Compatible). For additional keyways, see Cylinders and Keying section
<b>INTERCHANGEABLE CORE:</b>	• 6-pin or 7-pin • Compatible with Best SFIC • Not available in high security
<b>CONVENTIONAL KEY IN KNOB/ LEVER CYLINDER:</b>	• 6-pin Cylinder keyed to 5-pins
<b>KEYING:</b>	• Options: MK, CMK, or GMK, Zero Bitted (KO), Keyed Different (KD) or Keyed Alike (KA) • Can be keyed into existing master key systems. See Keyways Section
<b>FINISHES:</b>	• 605 (US3), 613E, 622 (US19), 626 (US26D) (See Note)
<b>CERTIFICATIONS, LISTINGS, COMPLIANCES:</b>	• ANSI, Grade 2 • UL listed for 3 hrs, for single doors up to 4'0" x 8'0" • Complies with ADA (Americans with Disabilities Act) and ICC/ANSI 117.1 for Accessible and Usable Buildings • TAA compliant. Country of origin: KR
<b>WARRANTY:</b>	• Two (2) year Limited Warranty

NOTE: OTHER FINISHES AVAILABLE. CONTACT CUSTOMER SERVICE FOR QUOTE AND LEAD-TIME.

## GRADE 2

## Perfect for Commercial Duty Applications

### Typical Applications

- Apartments
- Back-of-House Hotel/Motel
- Heavy-Duty Residential
- Houses of Worship
- Medium Traffic Commercial Applications
- Offices
- Retail Backroom
- Retrofit/Repair/Replacement
- Warehouses

### Features

- UL listed for 3-hour fire door
- Exceeds ANSI/BHMA A156.2 Grade 2
- 10 standard functions
- Various strike and latch options to accommodate any opening
- Available in keyways of most major manufacturers
- Tactile abrasive coating option
- Antimicrobial coating option
- One (1) year limited warranty



### Specifications



<b>FOR DOORS:</b>	• 1-3/8" to 1-3/4" thick
<b>BACKSET:</b>	• 2-3/4" standard • 2-3/8", 5" optional
<b>FRONT:</b>	• 2-1/4" x 1-1/8" or 2-1/4" x 1" • Stainless Steel or Wrought Brass
<b>STRIKE:</b>	• 4-7/8" x 1-1/4" (ASA). "T" or "FL" Strike optional. Stainless steel or wrought bronze
<b>ROSE:</b>	• 3" DIA Wrought
<b>LATCHBOLT:</b>	• 1/2" throw. Solid brass. Adjustable for beveled doors
<b>HAND:</b>	• Non-handed
<b>KEYS:</b>	• Two change keys per lock
<b>KEYWAYS:</b>	• Available in keyways of most major manufacturers
<b>CYLINDER:</b>	• Brass 6-pin cylinder keyed to 5 pins • Standard High Security and UL437 Cylinders Available
<b>TRIM:</b>	• Stainless Steel or Wrought Brass Knobs and Roses
<b>KEYING:</b>	• Can be MK, CMK, GMK, or CK. Available Zero Bitted (KO), Keyed Different (KD), Keyed Alike (KA). Can be keyed into existing masterkey systems of other manufacturers
<b>FINISHES:</b>	• 630 (US32D) • Optional Antimicrobial Coating available
<b>WARRANTY:</b>	• One (1) Year Limited Warranty
<b>CERTIFICATIONS, LISTINGS, COMPLIANCES:</b>	• Certified to ANSI/BHMA A156.2, Grade 2 • UL/CUL 10C listed for 3 hrs, for single doors up to 4'0" x 8'0" • TAA compliant. Country of origin: KR

## Spirit Series

---

### LOCK SOLUTIONS



#### Applications

A wide range of electronic locks powered by Spirit! Seamlessly connects with the PDQ Spirit app.

### SPIRIT



#### Applications

The Spirit App is your idea solution for bluetooth and Wi-Fi based access control. You can now easily control all Spirit door hardware from your phone!

---

## SDE Push Button Lock



#### Applications

The SDE is the ideal solution for securing entry and common area doors in multifamily and commercial applications. This cylindrical lock requires no wiring and provides easy PIN only access. Basic weather resistance means the lock can be used on exterior facings doors.



# KMS-SP

## Series

# Deadbolt

## ACCESS CONTROL CREDENTIALS



PHONE



RFID



KEY



PIN

## Features

- Built from PDQ's KM Series Heavy Duty Deadbolt
- Designed for quick installation
- 4 AA Alkaline batteries last up to 2 years or 5V DC
- Able to schedule specific access windows
- Log and track access events and status
- Monitors and protects openings with door obstruction alerts
- Battery status and low battery alerts

## Specifications



ADA COMPLIANT

<b>DOOR THICKNESS:</b>	• 1-3/8" to 1-3/4"
<b>BACKSET:</b>	• 2-3/8" - 2-3/4" (Adjustable)
<b>CREDENTIALS:</b>	• RFID • Smartphone • PIN • Mechanical Key
<b>KEYWAYS:</b>	• Conventional • SFIC • High Security • UL437
<b>CREDENTIAL COMPATIBILITIES:</b>	• Prox (Optional) • MIFARE DESFire EV1/EV2/EV3/Light • MIFARE Ultralight EV1/AES • MIFARE Classic
<b>COMMUNICATION:</b>	• BLE 4.2 • BLE 5.2 • WiFi 2.4 GHz 802.11 b/g/n (Optional)
<b>ENCRYPTION:</b>	• AES 256
<b>BATTERIES REQUIRED:</b>	• 4 AA Alkaline Batteries
<b>OPERATING TEMPERATURES:</b>	• -20C to 65C • 0-95% Humidity (Non-Condensing)
<b>CERTIFICATIONS &amp; COMPLIANCES:</b>	• FCC Part 15 • UL/cUL 10C 20-Minutes • Complies with ADA (Americans with Disabilities Act)
<b>MODES:</b>	• Standalone • Online
<b>FINISHES:</b>	• 606 (US4), 613E, 622 (US19), 626 (US26D)
<b>WARRANTY:</b>	• Two (2) year Mechanical / Two (2) year Electronics
<b>COUNTRY OF ORIGIN:</b>	• Assembled in USA



EXTERIOR VIEW



INTERIOR VIEW

## Cylinders



## Architectural Finishes



606 (US4)  
Satin Brass



613E  
Dark Oxidized Satin  
Bronze (Equivalent)



622 (US19)  
Flat Black



626 (US26D)  
Satin Chromium

# CLS-SP

## Series

# Interconnected

## ACCESS CONTROL CREDENTIALS



PHONE



RFID



KEY



PIN

### Features

- Built from PDQ's CL Series Interconnected Lock
- Designed for quick installation
- 4 AA Alkaline batteries last up to 2 years or 5V DC
- Able to schedule specific access windows
- Log and track access events and status
- Monitors and protects openings with door obstruction alerts
- Battery status and low battery alerts



EXTERIOR VIEW

### Specifications



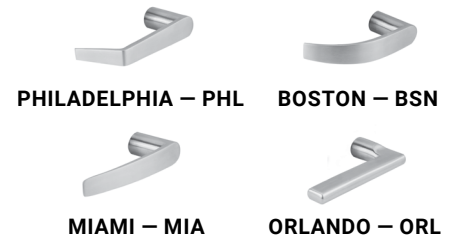
ADA COMPLIANT

<b>DOOR THICKNESS:</b>	• 1-3/8" to 1-3/4"
<b>BACKSET:</b>	• 2-3/4" (Adjustable)
<b>CREDENTIALS:</b>	• RFID • Smartphone • PIN • Mechanical Key
<b>KEYWAYS:</b>	• Conventional • SFIC • High Security • UL437
<b>CREDENTIAL COMPATIBILITIES:</b>	• Prox (Optional) • MIFARE DESFire EV1/EV2/EV3/Light • MIFARE Ultralight EV1/AES • MIFARE Classic
<b>COMMUNICATION:</b>	• BLE 4.2 • BLE 5.2 • WiFi 2.4 GHz 802.11 b/g/n (Optional)
<b>ENCRYPTION:</b>	• AES 256
<b>BATTERIES REQUIRED:</b>	• 4 AA Alkaline Batteries
<b>OPERATING TEMPERATURES:</b>	• -20C to 65C • 0-95% Humidity (Non-Condensing)
<b>CERTIFICATIONS &amp; COMPLIANCES:</b>	• FCC Part 15 • UL/cUL 10C 20-Minutes • Complies with ADA (Americans with Disabilities Act)
<b>MODES:</b>	• Standalone • Online
<b>FINISHES:</b>	• 606 (US4), 613E, 622 (US19), 626 (US26D)
<b>WARRANTY:</b>	• Two (2) year Mechanical / Two (2) year Electronics
<b>COUNTRY OF ORIGIN:</b>	• Assembled in USA

### Cylinders



### Levers



PHILADELPHIA – PHL

BOSTON – BSN

MIAMI – MIA

ORLANDO – ORL

### Architectural Finishes



606 (US4)  
Satin Brass



613E  
Dark Oxidized Satin  
Bronze (Equivalent)



622 (US19)  
Flat Black



626 (US26D)  
Satin Chromium

# SDS-SP

## Series

# Cylindrical Lock

## ACCESS CONTROL CREDENTIALS



PHONE



RFID



KEY



PIN

### Features

- Built from PDQ's SD Series Grade 2 Cylindrical Lock
- Designed for quick installation
- 4 AA Alkaline batteries last up to 2 years or 5V DC
- Able to schedule specific access windows
- Log and track access events and status
- Enable auto lock/unlock for enhanced security
- Battery status and low battery alerts

### Specifications



ADA COMPLIANT

<b>DOOR THICKNESS:</b>	• 1-3/8" to 1-3/4"
<b>BACKSET:</b>	• 2-3/8" • 2-3/4" (Standard) • 5"
<b>CREDENTIALS:</b>	• RFID • Smartphone • PIN • Mechanical Key
<b>KEYWAYS:</b>	• Conventional • SFIC • High Security • UL437
<b>CREDENTIAL COMPATIBILITIES:</b>	• Prox (Optional) • MIFARE DESFire EV1/EV2/EV3/Light • MIFARE Ultralight EV1/AES • MIFARE Classic
<b>COMMUNICATION:</b>	• BLE 4.2 • BLE 5.2 • WiFi 2.4 GHz 802.11 b/g/n (Optional)
<b>ENCRYPTION:</b>	• AES 256
<b>BATTERIES REQUIRED:</b>	• 4 AA Alkaline Batteries
<b>OPERATING TEMPERATURES:</b>	• -20C to 65C • 0-95% Humidity (Non-Condensing)
<b>CERTIFICATIONS &amp; COMPLIANCES:</b>	• FCC Part 15 • UL/cUL 10C 20-Minutes • Complies with ADA (Americans with Disabilities Act)
<b>MODES:</b>	• Standalone • Online
<b>FINISHES:</b>	• 606 (US4), 613E, 622 (US19), 626 (US26D)
<b>WARRANTY:</b>	• Two (2) year Mechanical / Two (2) year Electronics
<b>COUNTRY OF ORIGIN:</b>	• Assembled in USA



EXTERIOR VIEW

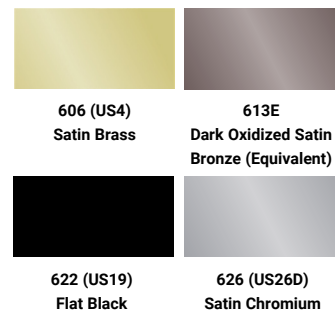
### Cylinders



### Levers



### Architectural Finishes



622 (US19)  
Flat Black

626 (US26D)  
Satin Chromium

# GTS-SP

## Series

# Cylindrical Lock

## ACCESS CONTROL CREDENTIALS



PHONE



RFID



KEY



PIN

## Features

- Built from PDQ's World-Class GT Series Grade 1 Cylindrical Lock
- Designed for quick installation
- 4 AA Alkaline batteries last up to 2 years or 5V DC
- Able to schedule specific access windows
- Log and track access events and status
- Enable auto lock/unlock for enhanced security
- Battery status and low battery alerts
- Local-activated lockdown for instant door security
- Do not disturb mode that temporarily blocks access
- Monitor egress with request to exit function

## Specifications



ADA COMPLIANT

<b>DOOR THICKNESS:</b>	• 1-3/4" to 2-1/4"
<b>BACKSET:</b>	• 2-3/4" (Standard) • 5" (Optional)
<b>CREDENTIALS:</b>	• RFID • Smartphone • PIN • Mechanical Key
<b>KEYWAYS:</b>	• Conventional • SFIC • High Security • UL437
<b>CREDENTIAL COMPATIBILITIES:</b>	• Prox (Optional) • MIFARE DESFire EV1/EV2/EV3/Light • MIFARE Ultralight EV1/AES • MIFARE Classic
<b>COMMUNICATION:</b>	• BLE 4.2 • BLE 5.2 • WiFi 2.4 GHz 802.11 b/g/n (Optional)
<b>ENCRYPTION:</b>	• AES 256
<b>BATTERIES REQUIRED:</b>	• 4 AA Alkaline Batteries
<b>OPERATING TEMPERATURES:</b>	• -20C to 65C • 0-95% Humidity (Non-Condensing)
<b>CERTIFICATIONS &amp; COMPLIANCES:</b>	• FCC Part 15 • UL/cUL 10C 45-Minutes • Complies with ADA (Americans with Disabilities Act)
<b>MODES:</b>	• Standalone • Online
<b>FINISHES:</b>	• 606 (US4), 613E, 622 (US19), 626 (US26D)
<b>WARRANTY:</b>	• Twenty-Five (25) year Mechanical / Two (2) year Electronics
<b>COUNTRY OF ORIGIN:</b>	• Assembled in USA



EXTERIOR VIEW



INTERIOR VIEW

## Cylinders



## Levers



PHILADELPHIA – PHL BOSTON – BSN MIAMI – MIA

## Architectural Finishes



606 (US4)  
Satin Brass



613E  
Dark Oxidized Satin  
Bronze (Equivalent)



622 (US19)  
Flat Black



626 (US26D)  
Satin Chromium

# MRS-SP

## Series

# Mortise Lock Sectional Trim

## ACCESS CONTROL CREDENTIALS



PHONE



RFID



KEY



PIN

## Features

- Built from PDQ's World-Class MR Series Grade 1 Mortise Lock
- Designed for quick installation
- 4 AA Alkaline batteries last up to 2 years or 5V DC
- Able to schedule specific access windows
- Log and track access events and status
- Enable auto lock/unlock for enhanced security
- Battery status and low battery alerts
- Do not disturb mode that temporarily blocks access
- Key override lets you know when the key has been used
- Latchbolt monitor lets you know when the lock has been used
- Monitor egress with request to exit function

## Specifications



<b>DOOR THICKNESS:</b>	• 1-3/4" (Standard) • 2" • 2-1/4" (Optional)
<b>CREDENTIALS:</b>	• RFID • Smartphone • PIN • Mechanical Key
<b>KEYWAYS:</b>	• Conventional • SFIC • LFIC • High Security • UL437
<b>CREDENTIAL COMPATIBILITIES:</b>	• Prox (Optional) • MIFARE DESFire EV1/EV2/EV3/Light • MIFARE Ultralight EV1/AES • MIFARE Classic
<b>COMMUNICATION:</b>	• BLE 4.2 • BLE 5.2 • WiFi 2.4 GHz 802.11 b/g/n (Optional)
<b>ENCRYPTION:</b>	• AES 256
<b>BATTERIES REQUIRED:</b>	• 4 AA Alkaline Batteries
<b>OPERATING TEMPERATURES:</b>	• -20C to 65C • 0-95% Humidity (Non-Condensing)
<b>CERTIFICATIONS &amp; COMPLIANCES:</b>	• FCC Part 15 • UL/cUL 10C 3-Hour • Complies with ADA (Americans with Disabilities Act)
<b>MODES:</b>	• Standalone • Online
<b>FINISHES:</b>	• 606 (US4), 613E, 622 (US19), 630 (US32D)
<b>WARRANTY:</b>	• Limited Lifetime Mechanical / Two (2) year Electronics
<b>COUNTRY OF ORIGIN:</b>	• Assembled in USA



EXTERIOR VIEW

### Cylinders



### Rose Designs



ROUND ROSE  
F-TRIM

SQUARE ROSE (SR)  
J-TRIM

### Levers



PHILADELPHIA – PHL

BOSTON – BSN

CHICAGO – CHI

MIAMI – MIA

MEMPHIS – MEM

DALLAS – DAL

ORLANDO – ORL

LOS ANGELES – LA

### Architectural Finishes



606 (US4)  
Satin Brass

613E  
Dark Oxidized Satin  
Bronze (Equivalent)



622 (US19)  
Flat Black

630 (US32D)  
Satin Stainless Steel

# 6EWS-SP

## Series

# Exit Device Trim

## ACCESS CONTROL CREDENTIALS



PHONE



RFID



KEY



PIN

## Features

- Built from PDQ's World-Class 6W Series Exit Device Trim
- For use with PDQ's 6300 Series RIM and Surface Vertical Rod
- 4 AA Alkaline batteries last up to 2 years or 5V DC
- Able to schedule specific access windows
- Log and track access events and status
- Enable auto lock/unlock for enhanced security
- Battery status and low battery alerts



EXTERIOR VIEW

## Cylinders



## Levers



PHILADELPHIA – PHL



BOSTON – BSN



MIAMI – MIA



CHICAGO – CHI



ORLANDO – ORL

## Architectural Finishes



606 (US4)  
Satin Brass



613E  
Dark Oxidized Satin  
Bronze (Equivalent)



622 (US19)  
Flat Black



626 (US26D)  
Satin Chromium

## Specifications



ADA COMPLIANT

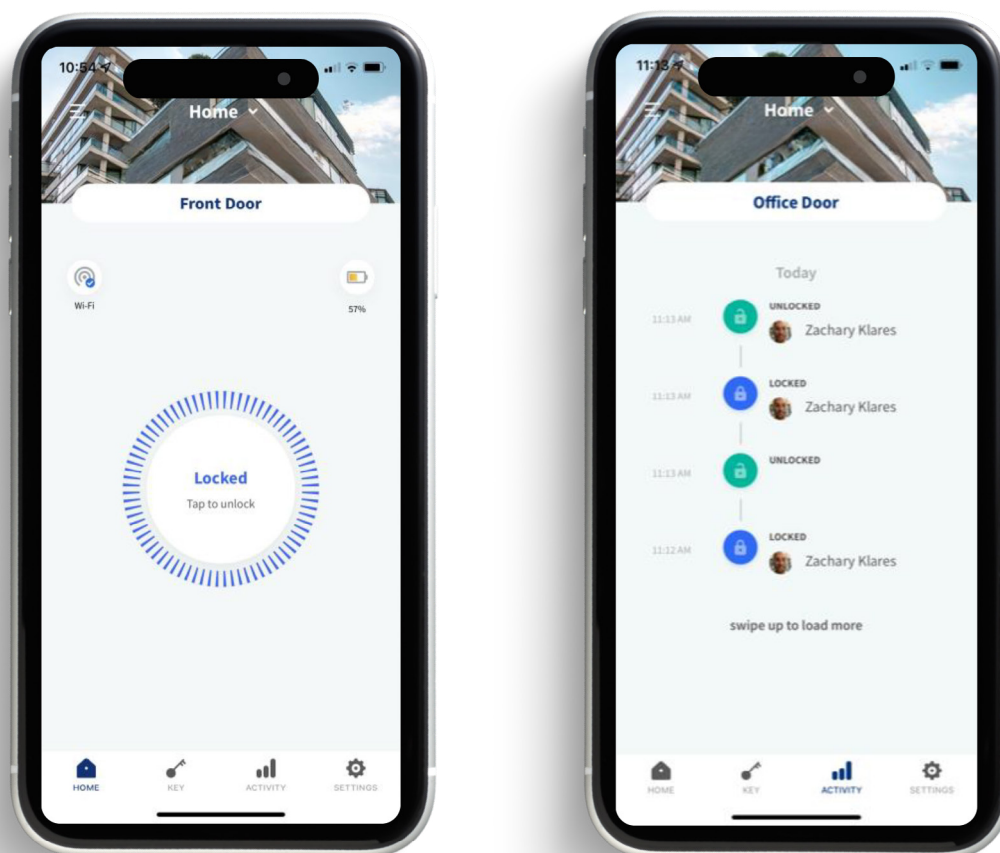
<b>DOOR THICKNESS:</b>	• 1-3/4" to 2-1/4"
<b>CREDENTIALS:</b>	• RFID • Smartphone • PIN • Mechanical Key
<b>KEYWAYS:</b>	• Conventional • SFIC • LFIC • High Security • UL437
<b>CREDENTIAL COMPATIBILITIES:</b>	• Prox (Optional) • MIFARE DESFire EV1/EV2/EV3/Light • MIFARE Ultralight EV1/AES • MIFARE Classic
<b>COMMUNICATION:</b>	• BLE 4.2 • BLE 5.2 • WiFi 2.4 GHz 802.11 b/g/n (Optional)
<b>ENCRYPTION:</b>	• AES 256
<b>BATTERIES REQUIRED:</b>	• 4 AA Alkaline Batteries
<b>OPERATING TEMPERATURES:</b>	• -20C to 65C • 0-95% Humidity (Non-Condensing)
<b>CERTIFICATIONS &amp; COMPLIANCES:</b>	• FCC Part 15 • UL/cUL 10C 3-Hour • Complies with ADA (Americans with Disabilities Act)
<b>MODES:</b>	• Standalone • Online
<b>FINISHES:</b>	• 606 (US4), 613E, 622 (US19), 626 (US26D)
<b>WARRANTY:</b>	• Two (2) year Electronics
<b>COUNTRY OF ORIGIN:</b>	• Assembled in USA

## Features

The Spirit App is your ideal solution for bluetooth based access control. You can now easily control all Spirit door hardware from your phone! The app is available for free for iOS devices.

Here are some key features:

- View an activity log of user access and device status
- Add / manage multiple Spirit devices in one place
- Set your ideal locking mode (normal operation, passage, privacy, or apartment)
- See your connection status and how it's connected
- Add users and guests with card, pin, and mobile access
- Receive notifications when battery levels are low
- Update lock software



## Typical Applications

- Multi-Family
- Commercial

## Features

- PIN & Mechanical Key
- 20 permanent PIN codes
- One-time (temporary) PIN, silent mode, auto-lock, time delay, and vacation mode
- Operated in standalone mode



EXTERIOR VIEW

## Specifications



<b>FOR DOORS:</b>	• 1-3/8" - 2"
<b>BACKSET:</b>	• 2-3/8" - 2-3/4" (Adjustable)
<b>STRIKE:</b>	• "T" strike default
<b>LATCHBOLT:</b>	• 2-3/8" - 2-3/4" (Adjustable)
<b>HAND:</b>	• Reversible Handing
<b>BATTERIES REQUIRED:</b>	• 4 AA Alkaline Batteries
<b>CERTIFICATIONS &amp; COMPLIANCES:</b>	• Complies with ADA (Americans with Disabilities Act)
<b>FINISHES:</b>	• 619 (US15), 622 (US19)
<b>WARRANTY:</b>	• One (1) Year Mechanical and One (1) Year Electronics

## Architectural Finishes



619 (US15)  
Satin Nickel

622 (US19)  
Flat Black



## Secure. Durable. Versatile.

Deadbolts are often paired with a cylindrical lock in commercial office spaces, residential applications and other spaces where there is a greater need for security—and, more specifically, a deadbolt that is more resistant to brute force attack. PDQ deadbolts provide security for a wide range of applications while allowing end users to meet their specific security needs.

### **KM** Heavy Duty Rim Cylinder



#### Applications

Heavy duty performance. Ideal for commercial, institutional, government, military, hospitality, hospital, multi-family, offices, and retail applications. Typical installations include storerooms, auxiliary entrance locks, communication doors in hotels, and aluminum storefronts.

### **KT** Extra Heavy Duty Mortise Cylinder



#### Applications

Heavy duty performance. Ideal for commercial, institutional, government, military, hospitality, hospital, multi-family, offices, and retail applications.

### **KV** Commercial Duty Rim Cylinder



#### Applications

Standard duty performance, ideal for light commercial and residential applications.

### **MJ** Extra Heavy Duty Mortise Cylinder



#### Applications

Small body deadbolt provides an extra measure of protection at a competitive price. Uses include common areas, auxiliary doors, closets, storerooms, and equipment rooms in commercial, institutional and military applications.

## Safety. Security. Peace of Mind.

### Typical Applications

- Auxiliary Doors
- Closets
- Commercial/Institutional/Military
- Common Areas
- Equipment Rooms
- Storerooms
- Restrooms
- Privacy Rooms



Standard Thumbturn



Indicator



Cylinder

### Specifications

#### Small Mortise Body Type Prep



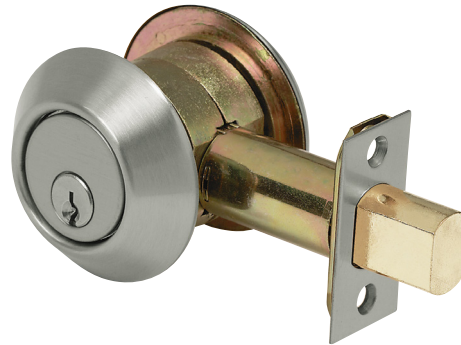
<b>FOR DOORS:</b>	• 1-3/4"
<b>BACKSET:</b>	• 2-3/4"
<b>CASE:</b>	• Steel – Dichromated for corrosion resistance
<b>FACEPLATE:</b>	• 1-1/4" x 5-5/8"
<b>FRONT:</b>	• 2-1/4" x 1" • Stainless Steel
<b>STRIKE:</b>	• 1-1/8" x 3-1/2"
<b>DEADBOLT:</b>	• 1" Throw • Stainless Steel
<b>THUMBTURN OPTION:</b>	• ADA Compliant
<b>INDICATOR:</b>	• Vacant/Occupied available
<b>HAND:</b>	• Non-handed except for function MJ134 Classroom. (See Function Table and How to Order Guide)
<b>KEYS:</b>	• Two (2) per Lock
<b>KEYWAYS:</b>	• SCC standard (Schlage C Compatible) • Also available in keyways of other manufacturers
<b>INTERCHANGEABLE CORE:</b>	• 6 or 7-pin • Compatible with Best, Falcon & Arrow • Large Format IC Cores compatible with Schlage
<b>CYLINDER:</b>	• 6 or 7-pin Mortise Cylinder
<b>KEYING:</b>	• Options: MK, CMK or GMK • Zero Bitted (KO), Keyed Different (KD) or Keyed Alike (KA) • Can be keyed into existing master key systems
<b>FINISHES:</b>	• 605 (US3), 606 (US4), 612 (US10), 613E, 622 (US19), 629 (US32), 630 (US32D)
<b>CERTIFICATIONS, LISTINGS, COMPLIANCES:</b>	• UL listed for 3 hours, for single doors up to 4'0"x 8'0" • TAA compliant. Country of origin: Taiwan
<b>WARRANTY:</b>	• 10-Year Limited Warranty

## COMMERCIAL GRADE

### Deadbolt is Grade Comparable with XGT and GT Series Grade 1 Cylindrical Locks

#### Typical Applications

- Commercial
- Government
- Hospitality
- Institutional
- Military
- Multi-family
- Offices
- Retail



#### Specifications

<b>FOR DOORS:</b>	• 1-3/4" thick standard, contact factory for other thicknesses
<b>DOOR PREP:</b>	• 2-1/8" DIA
<b>BACKSET:</b>	• 2-3/4" (Default) • 2-3/8" available
<b>FRONT:</b>	• 2-1/4" x 1-1/8" or 2-1/4" x 1" • Stainless Steel or Wrought Brass
<b>STRIKE:</b>	• 2-3/4" x 1-1/8" • Stainless Steel or Wrought Brass • Dust Box Included
<b>DEADBOLT:</b>	• 1" Throw • Brass Bolt containing two concealed 1/4" case-hardened Steel Roll Pins
<b>HAND:</b>	• Non-handed
<b>TRIM:</b>	• Wrought Brass Scalp • Reinforced Zinc Diecast Rose
<b>KEYS:</b>	• Two (2) per Lock
<b>KEYWAYS:</b>	• SCC standard (Schlage C Compatible) • Also available in keyways of other manufacturers
<b>CYLINDER:</b>	• 6-pin Brass Mortise Cylinder keyed to 5-pins, SFIC
<b>KEYING:</b>	• Options: MK, CMK or GMK • Zero Bitted (KO), Keyed Different (KD) or Keyed Alike (KA) • Can be keyed into existing master key systems
<b>FINISHES:</b>	• 605 (US3), 606 (US4), 612 (US10), 613E, 625 (US26), 626 (US26D)
<b>WARRANTY:</b>	• One (1) year Limited Warranty
<b>LISTINGS:</b>	• UL 10C listed, 3-hour fire rated as auxiliary locks for A label single doors • UL 10B listed for neutral pressure doors

## COMMERCIAL GRADE

### Deadbolt is Grade Comparable with GP and SD Series Grade 2 Cylindrical Locks

#### Typical Applications

- Commercial
- Government
- Hospitality
- Institutional
- Military
- Multi-family
- Offices
- Retail



ADA COMPLIANT

#### Specifications

<b>FOR DOORS:</b>	• 1-3/8" to 1-3/4" thick for Conventional Cylinder, 1-1/2" to 2" for SFIC
<b>DOOR PREP:</b>	• 2-1/8" DIA
<b>BACKSET:</b>	• 2-3/4" - 2-3/8" adjustable (Default) • 2-3/4" (Option) • 2-1/4" x 1" faceplate available
<b>FRONT:</b>	• 2-1/4" x 1-1/8" • Stainless Steel or Wrought Brass
<b>STRIKE:</b>	• 2-3/4" x 1-1/8" • Stainless Steel or Wrought Brass • Dust Box Included
<b>DEADBOLT:</b>	• 1" Throw • Brass Bolt containing one 1/4" case-hardened Steel Roll Pin
<b>THUMBTURN:</b>	• ADA Compliant
<b>HAND:</b>	• Non-handed
<b>TRIM:</b>	• Stainless Steel or Wrought Brass Scalp • Reinforced Zinc Diecast Rose
<b>KEYS:</b>	• Two (2) per Lock
<b>KEYWAYS:</b>	• SCC standard (Schlage C Compatible) • Also available in keyways of other manufacturers
<b>INTERCHANGEABLE CORE:</b>	• 6 or 7-pin • Compatible with Best, Falcon and Arrow
<b>CYLINDER:</b>	• 6-pin Brass RIM Cylinder keyed to 5-pins • Standard High Security and UL437 Cylinders Available
<b>KEYING:</b>	• Options: MK, CMK or GMK • Zero Bitted (KO), Keyed Different (KD) or Keyed Alike (KA) • Can be keyed into existing master key systems
<b>FINISHES:</b>	• 605 (US3), 606 (US4), 613E, 622 (US19), 626 (US26D), 630 (US32D)
<b>CERTIFICATIONS, LISTINGS, COMPLIANCES:</b>	• UL 10C listed, 3-hour fire rated as auxiliary locks for A label single doors • UL 10B listed for neutral pressure doors • Complies with ADA (Americans with Disabilities Act) and ICC/ANSI 117.1 for Accessible and Usable Buildings • TAA compliant. Country of origin: KR
<b>WARRANTY:</b>	• One (1) year Limited Warranty

## COMMERCIAL GRADE

**Deadbolt is Grade Comparable with GP and SD Series Grade 2 Cylindrical Locks**

### Typical Applications

- Light Commercial Installations
- Low Security Applications
- Residential



**KV SERIES with Privacy Indicator**

### Specifications



<b>FOR DOORS:</b>	• 1-3/8" to 1-3/4" thick for Conventional Cylinder, 1-1/2" to 2" for SFIC
<b>DOOR PREP:</b>	• 2-1/8" DIA
<b>BACKSET:</b>	• 2-3/4"/2-3/8" adjustable (Default)
<b>FRONT:</b>	• 2-1/4" x 1" with filler plate • Stainless Steel or Wrought Brass
<b>STRIKE:</b>	• 2-3/4" x 1" • Stainless Steel or Wrought Brass • Dust Box Included
<b>DEADBOLT:</b>	• 1" Throw • Brass Bolt containing one 1/4" case-hardened Steel Roll Pin
<b>HAND:</b>	• Non-handed
<b>TRIM:</b>	• Stainless Steel or Wrought Brass Scalp
<b>KEYS:</b>	• Two (2) per Lock
<b>KEYWAYS:</b>	• SCC standard (Schlage C Compatible) • Also available in keyways of other manufacturers
<b>INTERCHANGEABLE CORE:</b>	• 6 or 7-pin • Compatible with Best, Falcon and Arrow
<b>CYLINDER:</b>	• 6-pin Brass Insert Cylinder keyed to 5-pins • Standard High Security and UL437 Cylinders Available
<b>KEYING:</b>	• Options: MK, CMK or GMK • Zero Bitted (KO), Keyed Different (KD) or Keyed Alike (KA) • Can be keyed into existing master key systems
<b>FINISHES:</b>	• 605 (US3), 606 (US4), 612 (US10), 613E, 622 (US19), 629 (US32), 630 (US32D)
<b>CERTIFICATIONS, LISTINGS, COMPLIANCES:</b>	• ANSI "Positive Pressure Fire Tests of Door Assemblies" for up to and including 3 hrs. Assemblies" for up to and including 3 hrs • Complies with ADA (Americans with Disabilities Act) and ICC/ANSI 117.1 for Accessible and Usable Building • UL 10C listed, 3-hour fire rated as auxiliary locks for A label single doors • UL 10B listed for neutral pressure doors • TAA compliant. Country of origin: KR
<b>WARRANTY:</b>	• One (1) year Limited Warranty



# Standard, High Security and UL437 Cylinders and Cores

## Conventional Cylinders



- Key In Knob/Lever
- Default Keyway: Schlage C'
- 5 or 6 Pin
- Finishes: 606, 626



- Mortise
- Default Keyway: Schlage C'
- 5 or 6 Pin
- Finishes: 605, 606, 612, 613E, 625, 626



- Rim
- Default Keyway: Schlage C'
- 5 or 6 Pin
- Finishes: 605, 606, 612, 613E, 625,

## Interchangeable Cores



- SFIC, 6 or 7 Pin
- Default Keyway: Best A
- Finishes: 606, 626



- LFIC (Schlage Only) (Full Size) -6 Pin LFIC
- Default Keyway: Schlage C
- Finishes: 606, 626

## High Security and UL437



- Key In Knob/Lever
- UL437
- 6 Pin
- Finishes: 605, 613E, 626



- Mortise
- UL437
- 6 Pin
- Finishes: 605, 613E, 626



- SFIC
- 6 or 7 Pin
- Finishes: 626
- Schlage Compatible Large Format (Full Size) LFIC
- 6 Pin
- Finishes: 626



- Mortise
- 6 or 7 Pin Cores
- Finishes: 605, 606, 612, 613E, 625, 626
- SFIC
- LFIC (Schlage Only)

## Housings



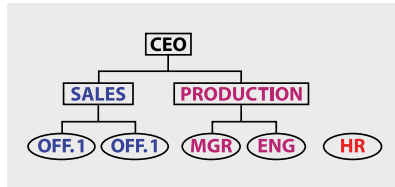
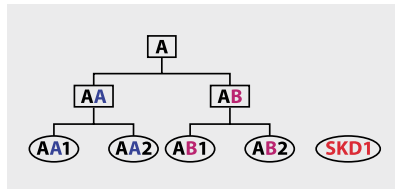
- Rim
- 6 or 7 Pin Cores
- Finishes: 605, 606, 612, 613E, 625, 626
- SFIC
- LFIC (Schlage Only)

# Master Keying Key System Design and Services

## Fastest Keying in the Industry

### Services

- Unmatched System Design Capabilities
- Visual key control
- Master keying
- Construction keying using Lost Ball System



**MASTER KEY SYSTEM PLANNING FORM**

Sold To: \_\_\_\_\_ Ship To: \_\_\_\_\_  Show 1 of 2 items

\_\_\_\_\_  L-Set \_\_\_\_\_  
 \_\_\_\_\_ Purchase Order No. \_\_\_\_\_

Job Name and Address: \_\_\_\_\_ Job Quantity: \_\_\_\_\_ Change Plans: \_\_\_\_\_

L-CCM \_\_\_\_\_  L-Per Cylinder \_\_\_\_\_

L-CCM \_\_\_\_\_  L-Per Keyed Site Group \_\_\_\_\_

L-DM \_\_\_\_\_  L-Per Keypad Different Col. \_\_\_\_\_

Special Function: \_\_\_\_\_

System Info: \_\_\_\_\_

L-Mini \_\_\_\_\_  L-Existing System \_\_\_\_\_

PKC ID # \_\_\_\_\_

Old Original PKC \_\_\_\_\_

Original Code of color \_\_\_\_\_

System Level:  L-1-SKD  L-2-SKD

**KEYING SCHEDULE**

Customer Name: \_\_\_\_\_ Purchase Order No. \_\_\_\_\_ Page  of

Quantity	Series/Function/Trim	Finish	Options

Special Elements:

Item	Quantity	Key Symbol	Hand (Specify Qty)			Door Number (Add to 10 thousands)	Heading (Add to 10 thousands)
			RR	LH	RRH		



## Keying

		MORTISE		CYLINDRICAL						INTERCONNECTED	
		MR	MJ	XGT	GT	GP	SD	SX	SV	CL	
<b>KEYS</b>	2 per lock	•	•	•	•	•	•	•	•	•	•
<b>KEYWAYS</b>	SCC Standard (Schlage compatible)	•	•	•	•	•	•	•	•	•	•
	Available in keyways of other manufacturers	•	•	•	•	•	•	•	•	•	•
<b>SFIC</b>	6 or 7 pin	•	•	•	•	•	•	•	•	•	•
	Available for all keyed functions	•	•	•	•	•	•	•	•	•	•
	Compatible with all SFIC.	•	•	•	•	•	•	•	•	•	•
<b>CYLINDER</b>	Large format IC core compatible with Schlage (Only)	•	•	•	•	•					
	5 or 6 pin brass mortise cylinder	•	•								
<b>KEYING</b>	6 pin brass insert cylinder keyed to 5 pins			•	•	•	•		•		•
	Options: MK, CMK, or GMK	•	•	•	•	•	•	•	•	•	•
	Zero Bitted (KO), Keyed Different (KD), or Keyed Alike (KA)	•	•	•	•	•	•	•	•	•	•
	Can be keyed into existing master key systems	•	•	•	•	•	•	•	•	•	•

## Keyway Availability

CONVENTIONAL CYLINDER		SMALL FORMAT INTERCHANGEABLE CORE		LARGE FORMAT INTERCHANGEABLE CORE			
KEYWAY	PDQ KEYWAY DESIGNATOR	KEYWAY (BEST COMPATIBLE)	PDQ KEYWAY DESIGNATOR	KEYWAY (SCHLAGE COMPATIBLE)	PDQ KEYWAY DESIGNATOR		
Schlage C (Default)	SCC	BEST A (Default), B, C, D, E, F, G, H, J, K, L, M, Q, R, WA, WB, WG, WH, TB, TD, TE	A (Default), B, C, D, E, F, G, H, J, K, L, M, Q, R, WA, WB, WG, WH, TB, TD, TE	Schlage C (Default)	SCC		
PDQ Restricted	TA			PDQ Restricted	TA		
Arrow AR1	AR1						
Corbin 59A1	CO59A1						
Corbin 60	CO6						
Corbin L4	CL4						
Russwin D1	RUD				PDQ1		
Russwin 981	RUD981			PDQ Exclusive	PDQ2		
Schlage E	SCE			PDQ Exclusive and Restricted	PDQ3		
Schlage C	SCC						
Schlage C-K	SCC-K						
Sargent LA	SAL						
Sargent RA-RC	RA-RC						
Yale E1R	YA8						
Yale GA	GA						
Falcon E-R	FAL						
Kwikset	KW						

## Keying

DESCRIPTION	PDQ KEYING DESIGNATOR
Keyed Different (Default)	KD
Keyed Alike	KA
1 Bitted	KO
Master Keyed	MK
Construction Master Keyed	CMK
Grand Master Keyed	GMK



## PL-1 IC Padlock

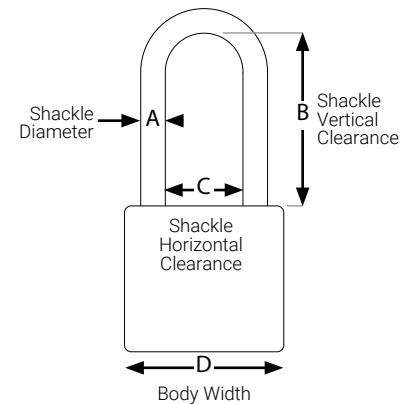
Solid brass padlock with hardened steel shackle, accepts standard 6 or 7 pin SFIC lock cylinders (sold separately).

### Typical Applications

- Gates
- Higher Education
- Industrial
- K-12 Education

## Padlock Sizing Chart

MODEL	DIMENSION A	DIMENSION B	DIMENSION C	DIMENSION D
PL1-B SF7L 626 FS	1/4"	1 1/2"	25/32"	1 19/32"
PL2-A SF7L 626	5/16"	3/4"	25/32"	1 3/4"
PL2-B SF7L 626	5/16"	1 1/2"	25/32"	1 3/4"
PL2-C SF7L 626	5/16"	2"	25/32"	1 3/4"
PL2-D SF7L 626	5/16"	4"	25/32"	1 3/4"
PL3-A SF7L 626	3/8"	3/4"	25/32"	1 31/32"
PL3-B SF7L 626	3/8"	1 1/2"	25/32"	1 31/32"
PL3-C SF7L 626	3/8"	2"	25/32"	1 31/32"
PL3-D SF7L 626	3/8"	4"	25/32"	1 31/32"



**NOTES:**  
• Prices do not include IC Core



## Security. Performance. Flexibility.

Exit devices are a critical part of a building's fire and life safety egress system. PDQ manufactures a full line of exit devices, including rim, vertical rod and mortise for both wide and narrow stile doors. These devices provide the best combination of simplicity, strength, durability, aesthetics, and innovation and are perfect for a vast array of applications.

### Comprehensive Offering

---

#### 6300 Architectural Wide Stile



##### Applications

The all NEW 6300 Series Wide Stile Exit Devices incorporate modern push bar styling for heavy traffic applications. These Grade 1 certified devices are put to the ultimate test everyday in K-12, higher education, Healthcare, and government buildings. Other applications include offices, banks, assisted living facilities, retail stores, and other commercial buildings that have constant traffic.

---

#### 6400 Architectural Narrow Stile



##### Applications

The all NEW 6400 Series Narrow Stile Exit Devices incorporate modern push bar styling for heavy traffic applications. These Grade 1 certified devices are put to the ultimate test everyday in K-12, higher education, Healthcare, and government buildings. Other applications include offices, banks, assisted living facilities, retail stores, and other commercial buildings that have constant traffic.

---

#### 4200 Commercial Wide Stile

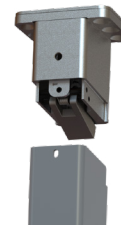


##### Applications

When low cost and dependability are essential, the 4200 Series is a great choice. A reliable workhorse, the 4200 Series is an economical answer for stock doors and frames.

---

#### 9300 Mullions



##### Applications

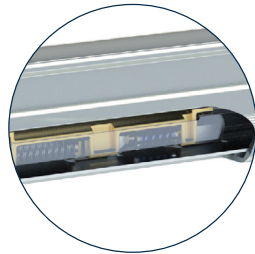
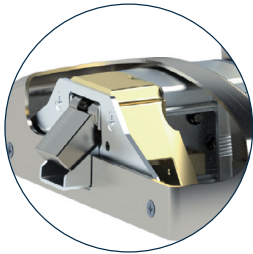
Designed for quick removal, the 9300 mullion is ideal in situations where carts, gurneys and large machinery need to pass freely through an opening. Popular applications include Healthcare, industrial manufacturing, and commercial businesses.

# Introducing the 6300/6400 SERIES Architectural Exit Device

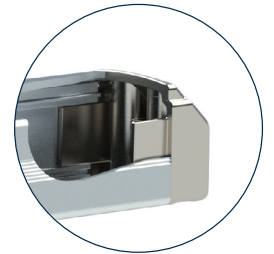
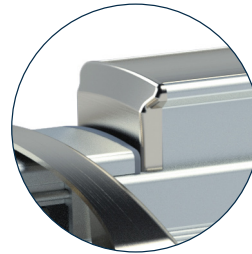


## Highlights

Chassis support is cast for high strength.



Push bar has angled ends and is nearly flush when dogged.



Flush end cap is standard, heavy duty engineered casting keys into the rail for ultimate pry resistance.



Cush spring quiets device in both directions. Compression spring returns the touch bar providing more reliability than a torsion type spring.

## Features

- Rugged, reliable, flexible, and simple design
- Designed & Assembled in Lancaster, PA
- Patent Pending
- Quiet operation - large heavy-duty spring cushion quiets both the compression/extension of the push bar
- Internal compression spring ensures long lasting push bar return
- Engineered strong and overbuilt for the most demanding environments
- Durable, heavy-duty flush end cap is standard and resist prying
- Stands up to cart abuse, heavy-duty flush end cap and tapered push bar designed to deflect hits and minimize damage
- Simple field door prep and installation
- Dogging holds bar in a retracted position nearly flush with head cover and rail
- Hex Key provided to dog/release the device
- No exposed screws on back of bar
- True 2-3/4" backset (with 5/8" frame stop and 1/8" door gap)
- Wood and machine screws included with each device
- Devices and trim are non-handed
- Ten (10) year warranty



**Rim**  
6300R / 6400R



**Surface Vertical Rod**  
6300V / 6400V



**Concealed Vertical Rod**  
6300C / 6400C



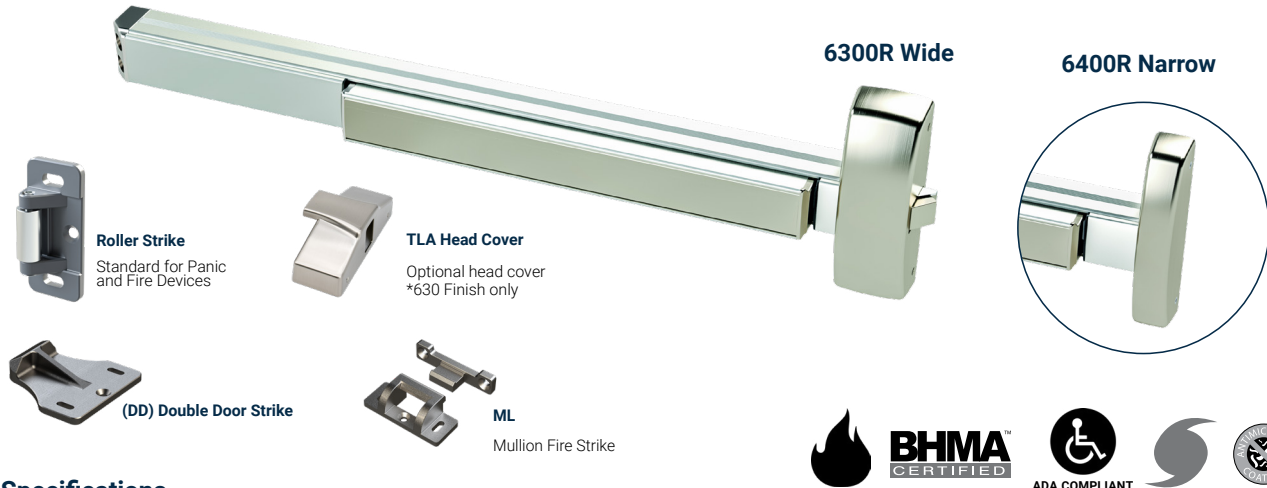
**Mortise**  
6300M

# 6300/ 6400R Series

# Wide/Narrow Stile Rim Exit Device

## 6300R Wide Stile/6400R Narrow Stile

### Panic & Fire Rated



### Specifications

<b>Rail:</b>	• Extruded aluminum • Specify 630F for full stainless surfaces (roll formed)
<b>Latch:</b>	• Stainless steel dead locking with 3/4" throw
<b>Hand:</b>	• Device is non-handed • Trim is non-handed or field reversible
<b>Dogging:</b>	• Hex key dogging standard • Cylinder dogging optional • Dogging not available for fire labeled devices
<b>Minimum Stile Width:</b>	• 6300 - 3-1/2" • 6400 - 2-1/8"
<b>Door Thickness:</b>	• 1-3/4" - 2" (Consult factory for other)
<b>Door Width:</b>	• 24", 36", 48" standard
<b>Door Height:</b>	• Panic - Up to 10' • Fire - See fire ratings charts in price book
<b>Strike Options:</b>	• Default roller • Blade stop • Double door • Windstorm/Fire Mullion - Panic Mullion uses standard roller strike
<b>Finishes:</b>	• 605 - Polished Brass, 606 - Satin Brass, 613E - Dark Oxidized Satin Bronze (Equivalent), 622 - Flat Black, 626 - Satin Chrome, 630 - Satin Stainless Steel, 630F - Full Stainless Steel • Optional Anti Microbial Coating available on 626 and 630
<b>Fasteners:</b>	• Includes machine and wood screws • SNB Optional
<b>Warranty:</b>	• Ten (10) year limited warranty
<b>Electrified Options:</b>	• Motorized Latch Retraction • Request to Exit/Signal Switch • Alarmed Exit • Latch Bolt Monitor • ISMC Connectors • Delayed Egress
<b>Certifications, Compliances, Listings:</b>	• Listed for UL 305 "Panic", listed for UL 10C "Fire Exit Hardware" up to 3 hours. • Certified to ANSI/BHMA A156.3 Grade 1 • FL #40297 +60/-65 psf 4080 16ga Single • FL #+50/-50 psf 4080 18ga Single • Complies with ADA (Americans with Disabilities Act) and ICC/ANSI 117.1 for Accessible and Usable Buildings • Meets requirements of the BAA as a COTS product manufactured in the United States • Meets CBC Chapter 11B-309.4 when ordered with 5P option

# 6300/ 6400V Series

# Wide/Narrow Stile Surface Vertical Rod Exit Device

## 6300V Wide Stile/6400V Narrow Stile Panic & Fire Rated



### Specifications

<b>Rail:</b>	• Extruded aluminum • Specify 630F for full stainless surfaces (roll formed)
<b>Latch:</b>	• Top - Stainless Steel 3/4" toggle • Bottom - 5/8" Travel Drop Bolt • Less bottom rod option
<b>Hand:</b>	• Device is non-handed • Trim is non-handed or field reversible
<b>Dogging:</b>	• Hex key dogging standard • Cylinder dogging optional • Dogging not available for fire labeled devices
<b>Minimum Stile Width:</b>	• 6300 - 3-1/2" • 6400 - 2-1/8"
<b>Door Thickness:</b>	• 1-3/4" - 2" (Consult factory for other)
<b>Door Width:</b>	• 24", 36", 48" standard
<b>Door Height:</b>	• Panic - Up to 10' • Fire - See fire ratings charts in price book
<b>Strike:</b>	• Cast top strike, plate bottom strike
<b>Finishes:</b>	• 605 - Polished Brass, 606 - Satin Brass, 613E - Dark Oxidized Satin Bronze (Equivalent), 622 - Flat Black, 626 - Satin Chrome, 630 - Satin Stainless Steel, 630F - Full Stainless Steel • Optional Anti-Microbial Coating available on 626 and 630
<b>Fasteners:</b>	• Includes machine screws and wood screws • SNB Optional
<b>Warranty:</b>	• Ten (10) year limited warranty
<b>Electrified Options:</b>	• Motorized Latch Retraction • Request to Exit/Signal Switch • Alarmed Exit • Latch Bolt Monitor • ISMC Connectors • Delayed Egress (Can only be used on a door with a 3 1/2" or larger stile)
<b>Certifications, Compliances, Listings:</b>	• Listed for UL 305 "Panic", listed for UL 10C "Fire Exit Hardware" up to 3 hours. • ANSI/BHMA A156.3 Grade 1 • Complies with ADA (Americans with Disabilities Act) and ICC/ANSI 117.1 for Accessible and Usable Buildings • FL # +50/-50 psf 8080 18ga Pair • Meets requirements of the BAA as a COTS product manufactured in the United States • Meets CBC Chapter 11B-309.4 when ordered with 5P option (Available with Top & Bottom Rod and Less Bottom Rod (LBR))

# 6300/ 6400C Series

# Wide/Narrow Stile Concealed Vertical Rod Exit Device

## 6300C Wide Stile/6400C Narrow Stile Panic & Fire Rated



### Specifications

<b>Rail:</b>	• Extruded aluminum • Specify 630F for full stainless surfaces (roll formed)
<b>Latch:</b>	• Top - Stainless Steel 3/4" toggle • Bottom - 5/8" Travel Drop Bolt • Less bottom rod option
<b>Hand:</b>	• Device is non-handed • Trim is non-handed or field reversible
<b>Dogging:</b>	• Hex key dogging standard • Cylinder dogging optional • Dogging not available for fire labeled devices
<b>Minimum Stile Width:</b>	• 6300 - 3-1/2" • 6400 - 2-1/8"
<b>Door Thickness:</b>	• 1-3/4" - 2" (Consult factory for other)
<b>Door Width:</b>	• 24", 36", 48" standard
<b>Door Height:</b>	• Panic - Up to 10' • Fire - See fire ratings charts in price book
<b>Strike:</b>	• Cast top strike, plated bottom strike
<b>Finishes:</b>	• 605 - Polished Brass, 606 - Satin Brass, 613E - Dark Oxidized Satin Bronze (Equivalent), 622 - Flat Black, 626 - Satin Chrome, 630 - Satin Stainless Steel, 630F - Full Stainless Steel • Optional Anti-Microbial Coating available on 626 and 630
<b>Fasteners:</b>	• Includes machine and wood screws • SNB Optional
<b>Warranty:</b>	• Ten (10) year limited warranty
<b>Electrified Options:</b>	• Motorized Latch Retraction • Request to Exit/Signal Switch • Alarmed Exit • Latch Bolt Monitor • ISMC Connectors • Delayed Egress
<b>Certifications, Compliances, Listings:</b>	• Listed for UL 305 "Panic", listed for UL 10C "Fire Exit Hardware" up to 3 hours • ANSI/BHMA A156.3 Grade 1 Pending • Complies with ADA (Americans with Disabilities Act) and ICC/ANSI 117.1 for Accessible and Usable Buildings • Meets requirements of the BAA as a COTS product manufactured in the United States • Meets CBC Chapter 11B-309.4 when ordered with 5P option (Available with Top & Bottom Rod and Less Bottom Rod (LBR))

# 6300M Series

# Mortise Exit Device

## 6300M Wide Stile Panic & Fire Rated



**TLA Head Cover**  
Optional head cover  
\*630 Finish only



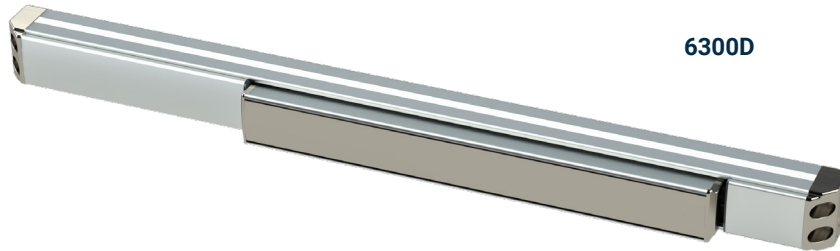
### Specifications

<b>Rail:</b>	• Extruded aluminum • Specify 630F for full stainless surfaces (roll formed)
<b>Latch:</b>	• Stainless steel dead locking with 3/4" throw
<b>Hand:</b>	• Field reversible
<b>Dogging:</b>	• Hex key dogging standard • Cylinder dogging optional • Dogging not available for fire labeled devices
<b>Minimum Stile Width:</b>	• 5"
<b>Door Thickness:</b>	• 1-3/4" - 2" (Consult factory for other)
<b>Door Width:</b>	• 24", 36", 48" standard
<b>Door Height:</b>	• Panic - Up to 10' • Fire - See fire ratings charts in price book
<b>Strike Options:</b>	• Default ASA (4-7/8")
<b>Finishes:</b>	• 605 - Polished Brass, 606 - Satin Brass, 613E - Dark Oxidized Satin Bronze (Equivalent), 622 - Flat Black, 626 - Satin Chrome, 630 - Satin Stainless Steel, 630F - Full Stainless Steel • Optional Anti Microbial Coating available on 626 and 630
<b>Fasteners:</b>	• Includes machine screws and wood screws • SNB Optional
<b>Warranty:</b>	• Ten (10) year limited warranty
<b>Electrified Options:</b>	• Motorized Latch Retraction • Request to Exit/Signal Switch • Alarmed Exit • Latch Bolt Monitor • ISMC Connectors • Delayed Egress
<b>Certifications, Compliances, Listings:</b>	• Listed for UL 305 "Panic", listed for UL 10C "Fire Exit Hardware" up to 90 minutes • Complies with ADA (Americans with Disabilities Act) and ICC/ANSI 117.1 for Accessible and Usable Buildings • Meets requirements of the BAA as a COTS product manufactured in the United States

# 6300D Series

# Dummy Exit Device

## 6300D Dummy



6300D



ADA COMPLIANT

### Specifications

<b>Rail:</b>	• Extruded aluminum
<b>Hand:</b>	• Device is non-handed
<b>Dogging:</b>	• Dogging standard    • Active push bar, dog to make inactive
<b>Minimum Stile Width:</b>	• 6300 - 3-1/2"
<b>Door Thickness:</b>	• 1-3/4" - 2" (Consult factory for other)
<b>Door Width:</b>	• 24", 36", 48" standard
<b>Finishes:</b>	• 605 - Polished Brass, 606 - Satin Brass, 613E - Dark Oxidized Satin Bronze (Equivalent), 622 - Flat Black, 626 - Satin Chrome, 630 - Satin Stainless Steel, 630F - Full Stainless Steel • Optional Anti Microbial Coating available on 626 and 630
<b>Fasteners:</b>	• Includes machine and wood screws    • SNB Optional
<b>Warranty:</b>	• Ten (10) year limited warranty
<b>Electrified Options:</b>	• Request to Exit/Signal Switch    • ISMC Connectors
<b>Certifications, Compliances, Listings:</b>	• Complies with ADA (Americans with Disabilities Act) and ICC/ANSI 117.1 for Accessible and Usable Buildings • Meets requirements of the BAA as a COTS product manufactured in the United States

# 6300/6400 Series

# Wide Stile/Narrow Stile Exit Device Trims

Trims are non-handed and use simple door prep based on a 2 hole bolt pattern with 7" centers, or a 4 hole bolt pattern with 7"x1-3/8" centers.

Narrow escutcheons work with both wide and narrow stile devices. Wide escutcheons work only with wide stile devices.



**6N Narrow Escutcheon** - A narrow profile escutcheon for 6300 or 6400 device. Available in 6 lever styles, and in 6 functions. Use with narrow stile devices or a wide stile device when a slimmer look is desired.



**6W Wide Escutcheon** - A wide escutcheon for the 6300 device. Available in 6 lever styles, and 5 functions - including electric locking. Use with wide stile devices, when a more substantial look is desired, or for retrofit where covering existing holes is important.

*\*Not compatible with 6400 narrow stile devices*



**6T Thumb Latch** - A grip pull with a thumb latch for 6300 or 6400 devices. Available in 3 functions.

*\*Not compatible with 6400C narrow stile devices.*



**6P Pull Plate** - Stainless Steel pull plate for 6300 device.

*\*Not compatible with 6400 narrow stile devices.*



**6G Grip Pull** - A grip pull for 6300 or 6400 devices. Made of stainless steel, this grip pull is available in 2 functions.



**6S Rose Trim** - Rose trim that fits into standard 161 prepped door with thru bolts. Works with 6300 rim, SVR and CVR devices. Available in 3 lever styles and in 4 functions.

*\*Not compatible with 6400 narrow stile devices*



**6GW Grip Pull** - A wide grip pull designed for 6300 exit devices. Available in 3 finishes and 3 functions.

*\*Not compatible with 6400 devices*

## Lever Styles

PHL



BSN



MIA



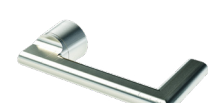
ORL



CHI



LAX





## MLR - Motorized Latch Retraction

### Operation

When power is applied the MLR retracts the latch(es) allowing the door to be opened. Duration of latch retraction is controlled by the access control system. Power can be continuously applied to electronically dog the exit device.

### Features

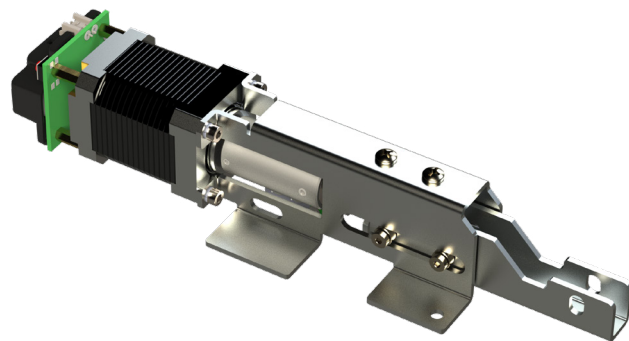
- Works with 6300 wide stile or 6400 narrow stile devices; panic or fire labeled
- Innovative motor drive retracts push pad
- Allows free egress at all times
- Suitable for pairing with Low Energy Power Operators

### Electrical Specifications

- Input voltage 24 VDC  $\pm$  10%
- Non-polarized power leads
- Latch Retraction Speed:  $\sim$ 300mS
- Average in-rush current: 900mA
- Average holding current: 200mA

### Retrofit kit part number: 639026

- Designed to field retrofit 6300 or 6400 series devices
- Includes motor drive module, connectors and fasteners



## 6W 99 - Electrified Locking/Unlocking Trim

For ordering information see trim section



### Operation

Field selectable operation - Fail Safe (Unlocked when power removed) or Fail Secure (Locked when power removed). Key allows entry but does not change state of lock.

### Features

- Motorized locking/unlocking
- Field changeable from Fail Secure (Default) to Fail Safe
- AC or DC input voltage.
- Works with rim, surface vertical rod and concealed vertical rod devices.
- Two (2) year warranty
- Designed and assembled in the USA, Lancaster, PA.

### Electrical Specifications

- Non-polarized power leads
- Power requirements: 12-24VDC/VAC  $\pm$  10%
- Average in-rush current: 12-24VDC/VAC: 1A for 1 second
- Average holding current: 12-24VDC: 5mA after 30 seconds  
12-24VAC: 15mA after 30 seconds
- Power must be applied for a minimum of 5 seconds

# 6300/6400 Series

# Electrified Options and Accessories

## AL - Alarm Kit ALHW - Alarm Kit (Hardwire power & relay output)

### Operation

Battery powered self-contained alarm kit for 6300 or 6400 exit device.

The alarm kit is armed via clockwise rotation of the key. If armed, a siren sounds, and the red LED rapidly flashes when the touch bar is depressed. Factory default is continuous alarm. Rotate key counterclockwise to silence siren and disarm the unit.

Alarm kit for panic devices include a third position for dogging the device.

**Alarm Mode:** Unit can be configured to auto silence the alarm after 7, 3 or 1 minute.

**Armed State:** Red LED blinks every 10-seconds to indicate unit is armed.

**Low Battery:** Siren will intermittently chirp when battery is low (<7VDC). Siren chirps regardless of arming state.

**Battery Life:** 1-year life expectancy in armed, unactuated state.

**Siren Intensity:** 95dB @ 4in

**Operating Temperature:** 0 C – 49 C

**Max Relative Humidity:** 85% (non-condensing)

**Included Decal:** "EMERGENCY EXIT ONLY – ALARM WILL SOUND"

**Latchbolt Monitor:** Standard for SVR device

**Optional Rim Latchbolt Monitor:** Adds latchbolt monitor. When armed, either the touch bar or latchbolt monitor actuate siren.

**Optional Relay Output:** Adds a Single Pole Double Throw (SPDT) relay and hardwire power input to the unit. When armed, relay state changes when the touch bar is depressed. Can be used with access control systems. Dry contact SPDT rated 125VAC/ 60VDC with 9VDC coil



### Bar Length:

36" Device – 2" max cut

48" Device – 8" max cut

### Electrical Specifications:

**Power Requirements:** One 9-VDC Alkaline Battery (included).

*Optional (with relay output):* 12-24VDC/VAC

±10% hardwired power. Battery can be used as emergency backup. It is protected from hardwired power.

### Power Consumption:

Typical: 18µA

During alarming: 18mA

How to order: Specify AL for alarm kit or ALHW alarm kit with optional hardwire and relay output.

### Panic rated device -

Position 1: On/Armed

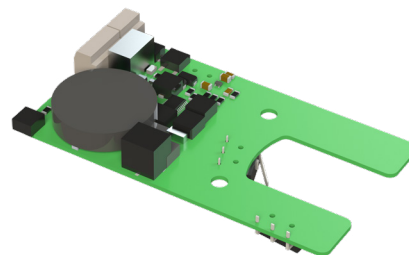
Position 2: Off

Position 3: Off & Dogged

### Fire Rated Device -

Position 1: On/Armed

Position 2: Off



# 6300/6400 Series

# Electrified Options and Accessories

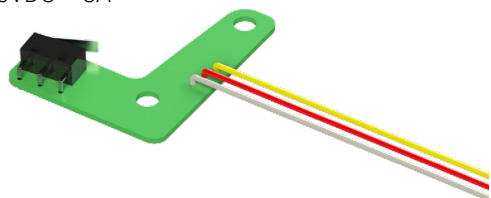
## SS - Signal Switch/REX - Request to exit

### Operation:

Monitors push bar operation. NO or NC operation.

### Electrical Specifications:

Single Pull Double Throw (SPDT): 125VAC – 3A  
30VDC – 3A



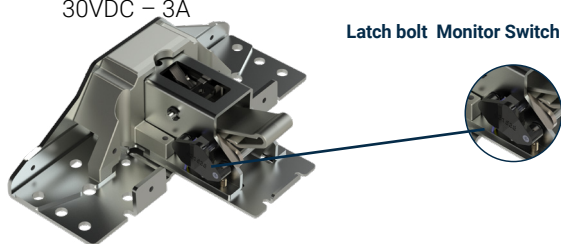
## LM - Latch bolt Monitor Switch

### Operation:

Monitors latch status. Available on Rim, SVR, CVR and Mortise. NO or NC operation.

### Electrical Specifications:

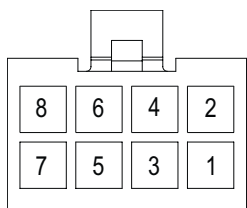
Single Pull Double Throw (SPDT): 125VAC – 3A  
30VDC – 3A



## ISMC - Industry Standard Molex Connector

### Operation:

Molex type connectors for simpler wiring



Terminal insertion end shown for ISMC connector (PDQ P/N 88850)

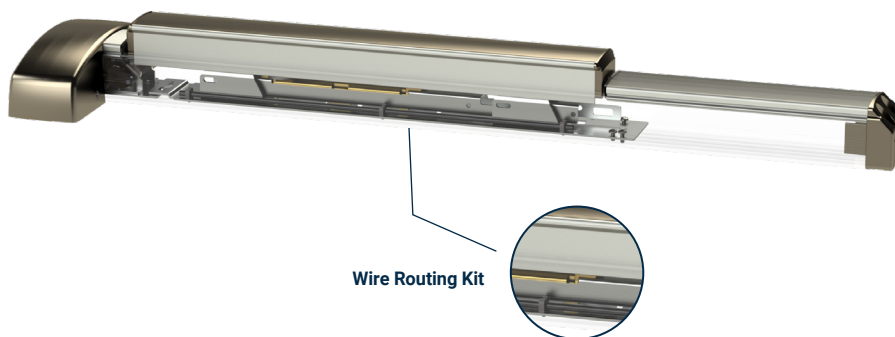
Function	Wire Color	Optional ISMC Pin#
Power*	White/Blue	1
Power*	White/Blue	2
REX(COM)	Yellow	3
REX(N/O)	Red	4
REX(N/C)	Gray	5
LM(COM)	Black	6
LM(N/O)	Brown	7
LM(N/C)	Blue	8

\*Power wires are non-polar

## Wire Routing Kit

Included with Latch bolt Monitor Switch, 6W99 Trim, and available as a kit.

**Description:** Safely route wires through device where they will not be pinched.



Wire Routing Kit

# DELAYED EGRESS

# Electrified Options and Accessories



## DE - Delayed Egress

### Overview:

This Delayed Egress exit device is designed to slow the egress or exit from a particular area, usually for security reasons or to prevent unauthorized access.

Delayed egress exit devices are commonly used where enhanced security measures are needed. Examples include hospitals, schools, airports, or shopping centers. These devices are designed to meet safety regulations and building codes. Local regulations and building codes may govern the specific requirements for the installation and usage of these devices.

### Device Function Overview:

- Armed: When armed, this device activates an internal blocking mechanism to prevent exiting the door from the inside until the proper release sequence has been completed.
- Release Delay: When an attempt is made to open the door from the inside, the device sounds an alarm and initiates a countdown.
- Free Exit: Upon completion of the Release Delay countdown, the device will release the push bar and allow free exit from the door until it is reset. An alarm will continue to sound until the device is reset.
- Fire Contacts: The power supply for this device must be connected to a fire alarm to cut power to the device, allowing immediate egress in the event of an emergency

\*IMPORTANT\*

Local regulations and building codes may dictate specific requirements for the installation and usage of these devices.

### Electrical Specifications:

24VDC +/-10%, 1A average inrush, 250mA continuous

## DEFINITIONS

### Fire Alarm – Power Supply

Usage: Required by Code

Power supply must be wired to cut power to the DE device on activation of fire alarm. The example wiring diagram in the manual shows how devices should be wired if using our PS220 power supply. AUL294 rated power supply providing a minimum of 1 Amp at 24VDC (+/-10%) with fire alarm link is required.

### Inhibit Contact

Usage: Optional

Type: Normally Open

Contact closure allows free egress/ingress without sounding the alarm. After Inhibit completes, the system resets automatically when contact position conditions are satisfied (door position switch and optional latch monitor switch). Inhibit is usually wired to an access control system to allow entry from the outside or exit from the inside without alarming the device. When not used for Inhibit, this input can be used to reset a device in alarm.

### Door Position Switch (DPS)

Usage: Preferred

Type: Normally Closed

The Door Position Switch input senses door opening. If the door has been opened without using the Inhibit feature, the internal alarm will sound. The DPS contact must be closed to arm the device including after inhibit has been used. If not used, bypass DPS by closing circuit.

### Relay Contacts

Usage: Optional

Type: SPDT

Opens or closes contact upon system arming. Can be used to signal security system when device is armed. Relay contacts will change state when device alarms and during Inhibit.

### Nuisance Delay

Configurable: Immediate, 1 second

The Nuisance Delay starts from the first moment the push bar is pressed. If set to Immediate, the device will immediately begin the Release Delay. If set to 1 second, the device will sound a beep when pressed. If the device is released before 1 second it will return to the previous, armed state. If held for longer than 1 second the device will proceed to the Release Delay. This is useful in public areas where the device may be accidentally activated.

### Release Delay

Configurable: 15 seconds, 30 seconds

When the Release Delay is initiated, the push bar will remain locked and a warning beep will sound for the configured number of seconds (less any time already occupied by the Nuisance Delay). Once started, the Release Delay sequence cannot be stopped and the device will allow egress after the configured time has passed.

### Rearm Delay

Configurable: Immediate, 1 second, 5 seconds, 15 seconds

The time the device waits to arm following arming with the Key Switch or Inhibit Input. The device will arm when door closes (and DPS is satisfied) and the rearm delay has completed. Rearm delay can also be set to 15 seconds to allow door to close after Inhibit when DPS is not used. beep

- Alarming – Pulsing Beep

## INTERFACE

### Key Switch

- The Key Switch Arms or Disarms the device.
- Turning the Key Switch counter-clockwise arms the device (following the Rearm Delay)
- Turning the Key Switch clockwise Disarms the device immediately

### Status Indicator LED

- Armed – Solid Red LED
- Disarmed / Alarmed – Red LED is off
- Inhibit Active – Red LED is off

### Internal Alarm

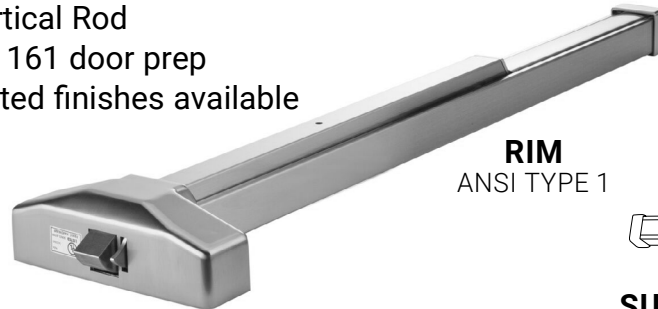
- Nuisance Delay Active – Short continuous beep
- Release Delay Initiated – Long continuous beep
- Alarming – Pulsing Beep

# 4200 Series

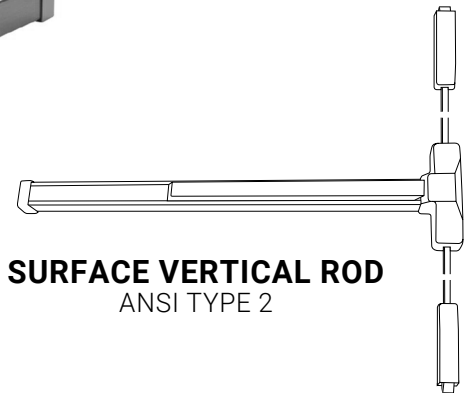
# Commercial Stile Exit Device

## Economical, Reliable Workhorse

- Rim, Surface Vertical Rod
- Compatible with 161 door prep
- Architectural plated finishes available
- 5-Year Warranty



**RIM**  
ANSI TYPE 1



**SURFACE VERTICAL ROD**  
ANSI TYPE 2



ADA COMPLIANT

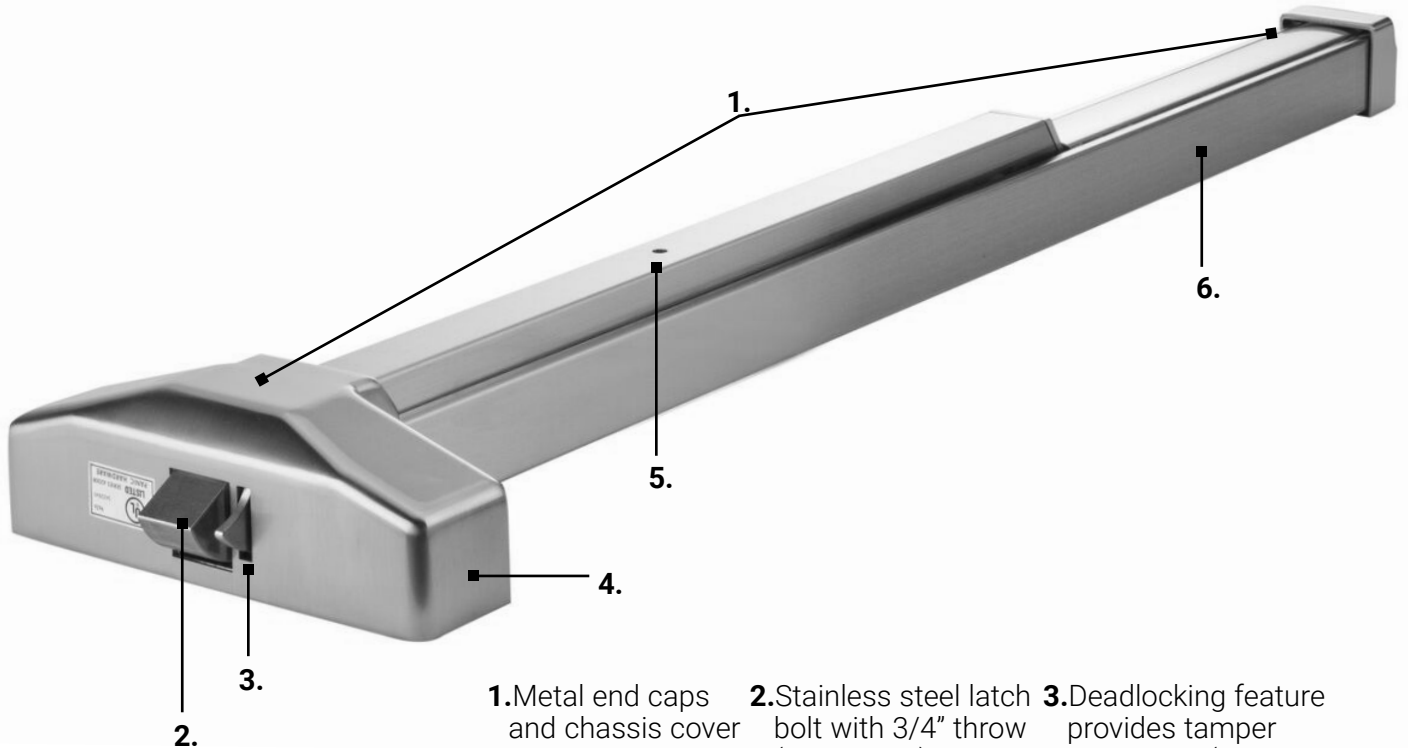
### Specifications (For all models Unless Noted\*)

<b>CHASSIS:</b>	• Corrosion resistant plated steel
<b>RAIL:</b>	• Heavy gauge steel or stainless steel
<b>LATCH:</b>	• RIM (R) – 3/4" throw*
<b>BACKSET:</b>	• 2-3/4" Backset Compatible with 161 prep
<b>HAND:</b>	• Device is non-handed
<b>DOGGING:</b>	• Hex key dogging standard • Dogging not available on fire listed devices
<b>MINIMUM STILE WIDTH:</b>	• 4-1/4" for device (exit only) • Minimum stile requirements with trim varies by trim type
<b>DOOR THICKNESS:</b>	• 1-3/4" standard
<b>DOOR WIDTH:</b>	• Standard for 3 ft doors, option available for doors up to 4'
<b>FINISHES:</b>	• 626 Satin Chrome, 630 – Satin Stainless Steel, 689 – Aluminum, 695 - Duro Bronze, 696 – Gold
<b>FASTENERS:</b>	• Includes machine screws and wood screws • Sex nuts supplied with all Fire Listed devices
<b>WARRANTY:</b>	• Five (5) year limited warranty
<b>CERTIFICATIONS, LISTINGS, COMPLIANCES:</b>	• UL 305 listed for "Panic", UL listed for "Fire Exit Hardware" labeled for up to 1-1/2 hours, 3'0" x 7'0" Max Size • Complies with ADA (Americans with Disabilities Act) and ICC/ANSI 117.1 for Accessible and Usable Buildings • TAA compliant. Country of origin: Taiwan

### Surface Vertical Rod Exceptions\*

<b>LATCH:</b>	• SURFACE VERTICAL ROD (V) – Top Latch-Pullman with dead latching 5/8" throw - Bottom Latch- Pullman with 5/8" throw, held retracted during door swing
<b>VERTICAL RODS:</b>	• Stock for 7' doors standard. Extension rods available for doors up to 10'

## Architectural Finishes. No Plastic Parts.



2.

3.

4.

5.

1.

6.

- 1. Metal end caps and chassis cover
- 2. Stainless steel latch bolt with 3/4" throw (rim shown), 5/8" throw (vertical rod devices)
- 3. Deadlocking feature provides tamper resistance (rim shown)
- 4. Corrosion resistant steel plated chassis
- 5. Hex key dogging (Dogging not available with fire labeled devices)
- 6. Heavy gauge roll formed steel or stainless steel rail

### Decorative Finish Collection

#### Architectural

626 Satin Chromium Plated  
630 Satin Stainless Steel

#### Painted

689 Aluminum  
695 Dark Bronze  
696 Gold



# 4200 Series

# Configurations/Trim and Levers

## Levers\*



Philadelphia



Boston



Miami

## Trims\*



Escutcheon



Sectional



Grip Pull



Pull



Plate



Sectional Knob

## Architectural Finishes\*



613E  
Dark Oxidized  
Satin Bronze  
(Equivalent)



626 (US26D)  
Satin Chromium



630 (US32D)  
Satin Stainless  
Steel



689 (US28)  
Aluminum



695  
Dark Duranodic  
Bronze

## Painted Finishes\*

\*Contact factory or consult PDQ Price Book to check availability of lever/trim combinations and/or finishes for specific products.



# 9300 SERIES

# Mullions

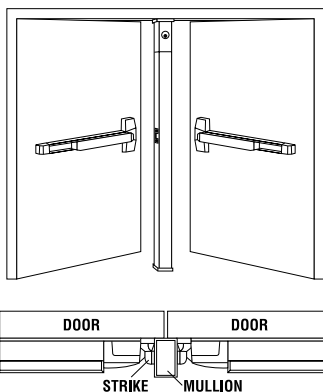
## 9300 Mullion

The PDQ 9300 Series removable mullions are designed for use with the 6300/6400 Series Rim Exit Devices on pairs of doors. They are designed for quick removal from the top bracket by simple operation of the rim cylinder when a clear, unobstructed large opening is required. Once the mullion is removed, carts, gurneys, large machinery and the like can freely pass through the opening. When the mullion is re-installed, the unit will self lock in place without a key.

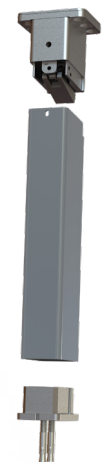
## Specifications

<b>Mullion Head/Foot brackets:</b>	• Cast Stainless Steel
<b>Tube Dimensions:</b>	• Powder Coated 2" x 3" Steel - 3/16" Wall
<b>Strike:</b>	• 639080 Strike included for Fire Labeled • Strike not included for panic mullion. Use supplied strike with exit device
<b>Size:</b>	• 8' or 10' lengths - Can easily be cut to shorter size in field
<b>Finish:</b>	• Powder Coated 689 (Aluminum) - can be painted
<b>Electrified Options:</b>	• Wire routing w/ plugs
<b>Warranty:</b>	• One (1) year limited warranty
<b>Certifications, Compliances, Listings:</b>	• Fire model is 3 hour fire labeled for pairs up to and including 8' x 8' (With 6300RF/6400RF Rim Device) • Meets requirements of the BAA as a COTS product manufactured in the United States

## Orientation



Key Removable



Hex Key Removable

## GRADE 1

### Making Door Control Easy

PDQ offers a comprehensive line of door closers designed and manufactured to ensure superior performance and reliability. They offer the perfect combination of reliability, appearance, and durability. With a wide range of models and features, PDQ has a door closer for most applications.

#### **7100** Institutional



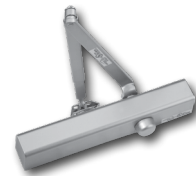
**7100** — The 7100 Series is PDQ's top of line heavy duty closer. It is designed for high use, high abuse institutional applications such as K-12, higher education and government buildings. 7100 Series closers are ideal for retrofit and new construction applications where strength and durability are required.

#### **5500** Institutional



**5500 (Full cover)** — Designed for maximum versatility, the 5500 Series sports a full cover and can be used for both commercial and institutional applications. This rugged workhorse is perfect for high traffic applications including federal/state buildings, assisted living facilities, hospitality, retail, religious, and medical buildings for example.

#### **5300** Commercial



**5300 (Slim cover)** — The aesthetically pleasing 5300 Series comes standard with a slim line cover and offers the ideal combination of appearance, reliability, and durability for today's market. This rugged closer is perfect for high traffic applications such as healthcare, hospitality, government, assisted living, retail, and religious facilities.

#### **5100** Commercial



**5100** — 5100 Series Door Closer is a heavy duty multi-feature closer that is perfect for high use, high abuse applications such as K-12, higher education, and government buildings. The 5100's compact design is ideal for interior door applications where it's distinctive lines harmonize with most decors.

#### **3100** Light Commercial



**3100** — Designed for medium-light duty applications, the 3100 Series is ideal for aluminum storefronts, interior offices, multi family, hospitality and many other applications. The 3100 combines dependable operation, low maintenance and stylish look.

# 7100 SERIES

# Institutional Full Featured Heavy Duty Closer

## GRADE 1

## Top Choice for High Use / Abuse Applications

- Instructions include full-size, tape-on application specific templates
- Great for retrofits. Mounting hole pattern matches LCN® 4040
- Meets Barrier Free/ADA Requirements

### Features

- Heavy duty, fully featured architectural style door control
- High strength cast iron body and forged steel arm assembly provide maximum durability and reliability in the most brutal environments
- Backcheck positioning valve feature provides a consistent backcheck snubbing range for regular, top jamb and parallel arm applications, preventing costly damage during forceful opening of the door
- The 7100 series has a fully adjustable spring range that can be set to meet barrier free requirements
- Maximum 3" reveal for Top Jamb.

### Typical Applications

- Assisted Living
- Higher Education
- High Use/High Abuse Situations
- K-12 Education
- Military and Government
- Multi-family
- Offices
- Public Buildings



### Specifications

<b>BODY:</b>	• High Strength Cast Iron
<b>ARMS:</b>	• Forged steel main arm
<b>ARM OPTIONS:</b>	<ul style="list-style-type: none"> <li>• <b>PA</b> – Parallel Arm</li> <li>• <b>HO</b> – Hold Open</li> <li>• <b>DS/DSHO</b> – Heavy Duty Parallel Stop</li> <li>• <b>RA</b> – Regular Arm</li> <li>• <b>SCS/SCSHO</b> – Spring Cushion Stop for DS/DSHO</li> <li>• <b>TA/TAHO</b> – Track Arm</li> <li>• <b>EDA/EDAHO</b> – Extra Duty Parallel Arm</li> </ul>
<b>PISTON:</b>	• 1-1/2" diameter
<b>ADJUSTMENT:</b>	<ul style="list-style-type: none"> <li>• Hydraulic controlled closing</li> <li>• Hydraulic backcheck standard</li> <li>• Backcheck positioning valve standard (starts backcheck snubbing sooner)</li> <li>• Optional delayed action (in addition to backcheck)</li> </ul>
<b>ADJUSTMENT VALVES:</b>	• All Adjustment Valves are STAKED to prevent removal during adjustment
<b>SIZE:</b>	• Adjustable BF through 6
<b>MOUNTING RETROFIT:</b>	<ul style="list-style-type: none"> <li>• Mounting hole pattern retrofits LCN® 4040 • Tri-packed for regular, top jamb and parallel arm installations</li> <li>• Includes sex nuts/bolts and screws for wood/metal doors/frames</li> <li>• Self drilling self tapping screws standard</li> <li>• Separate limiting stop may be required for high abuse applications</li> </ul>
<b>COVER:</b>	• Full plastic cover standard, optional full metal cover available
<b>FINISHES:</b>	• 605 – Polished Brass, 625 – Polished Chrome, 689 – Aluminum, 693 – Black, 695 – Duro Bronze, 696 – Gold
<b>WARRANTY:</b>	• Twenty-five (25) year Limited Warranty
<b>CERTIFICATIONS, LISTINGS, COMPLIANCES:</b>	<ul style="list-style-type: none"> <li>• UL listed for labeled swinging fire doors rated up to and including 3 hours</li> <li>• Certified to ANSI/BHMA A156.4 Grade 1</li> <li>• Complies with ADA (Americans with Disabilities Act) and ICC/ANSI 117.1 for Accessible and Usable Buildings</li> <li>• TAA compliant. Country of origin: KR</li> </ul>

# 5300 Slim Cover 5500 Full Cover SERIES

# Commercial Full Featured Closer

## GRADE 1

## Biggest Bang For Your Buck

- Perfect for stocking distributors; tri-packed, size range 1 through 6
- Great for retrofits. Mounting hole pattern matches Norton 8300/8500 and Yale 3300/3500
- 25-Year Warranty

### Features

- 1-1/4" diameter hardened steel piston
- Heavy duty, fully featured architectural style door control
- Available with modern streamline cover or full sized cover
- Compact appearance and features meet the demands of institutional and commercial applications
- The standard tri-pack, full range spring adjustment and common 12" x 3/4" mounting hole pattern make the 5300/5500 ideally suited for stocking distributors and retrofit applications
- Adjustable hydraulic backcheck prevents damage for uncontrolled door opening
- Perfect solution for a variety of applications requiring streamline architectural grade door controls
- Maximum 4" reveal for Top Jamb.

### Typical Applications

- Assisted Living
- Exterior Doors in Heavy Draft/Wind Conditions
- Government Facilities
- Healthcare
- Higher Education
- Hospitality
- Houses of Worship
- Industrial
- K-12 Education
- Offices
- Retail



5300 Series



5500 Series

## Specifications



<b>BODY:</b>	• Cast High Strength Aluminum Alloy Body	
<b>ARM OPTIONS:</b>	<ul style="list-style-type: none"> <li>• PA – Parallel Arm</li> <li>• HO – Hold Open</li> <li>• DS/DSHO – Heavy Duty Parallel Arm Stop</li> <li>• RA – Regular Arm</li> </ul>	<ul style="list-style-type: none"> <li>• SCS/SCSHO – Heavy Duty Parallel Arm Cushion Stop</li> <li>• TA/TAHO – Track Arm</li> <li>• EDA/EDAHO – Extra Duty Parallel Arm</li> <li>• PS – Pivot Stop Arm*</li> </ul>
<b>ADJUSTMENT:</b>	<ul style="list-style-type: none"> <li>• Hydraulic controlled closing</li> <li>• Separate hydraulic backcheck standard</li> <li>• Optional adjustable delayed action (in addition to backcheck)</li> </ul>	
<b>RETROFIT:</b>	• Common 12" x 3/4" mounting hole pattern retrofits Norton 8300/8500® and Yale 3300/3500	
<b>SIZE:</b>	• Adjustable  BF through 6	
<b>MOUNTING:</b>	<ul style="list-style-type: none"> <li>• Includes sex nuts/bolts and screws for wood/metal doors/frames</li> <li>• Tri-packed for regular, top jamb and parallel arm installations</li> <li>• Separate limiting stop may be required for high abuse applications</li> <li>• Self drilling, self tapping screws standard</li> </ul>	
<b>COVER:</b>	• 5300 Series - Streamline plastic cover (non-handed) 5500 Series - Full plastic cover standard (field reversible)	
<b>FINISHES:</b>	• 605 – Polished Brass, 625 – Polished Chrome, 689 – Aluminum, 693 – Black, 695 – Duro Bronze, 696 – Gold	
<b>WARRANTY:</b>	• Twenty-five (25) year Limited Warranty	
<b>CERTIFICATIONS, LISTINGS, COMPLIANCES:</b>	<ul style="list-style-type: none"> <li>• UL listed for labeled swinging fire doors rated up to and including 3 hours</li> <li>• Certified to ANSI/BHMA A156.4 Grade 1</li> <li>• Complies with ADA (Americans with Disabilities Act) and ICC/ANSI 117.1 for Accessible and Usable Buildings</li> <li>• TAA compliant. Country of origin: KR</li> </ul>	

# 5100 Series

# Commercial Full Featured Closer

## GRADE 1

## 1 - 1/2" Diameter Hardened Steel Piston

- Handsome and durable with a full cover
- Architectural and painted finishes
- 25-Year Warranty

### Typical Applications

- Aluminum Storefronts
- Assisted Living
- Government Facilities
- Higher Education
- Hospitality
- Houses of Worship
- Interior Office Doors
- Multi-family
- Offices
- Retail

### Features

- Features a 1-1/2" diameter hardened steel piston
- Fully featured architectural style door control
- Full cover and flat design arm assembly provide both durability and aesthetically pleasing appearance in commercial and institutional applications
- The closer is ideally suited for installation on wood or metal doors and frames.
- The units are non-handed and fully adjustable from size one through six for maximum flexibility.
- The standard tri-pack feature provides versatility to permit regular, top-jamb and parallel arm installations.
- A range of sprayed and architectural finishes are available to compliment any décor.
- Maximum 4" reveal for Top Jamb.



### Specifications

<b>BODY:</b>	• High Strength Aluminum Alloy Body
<b>ARM OPTIONS:</b>	<ul style="list-style-type: none"> <li>• <b>PA</b> – Parallel Arm</li> <li>• <b>HO</b> – Hold Open</li> <li>• <b>DS/DSHO</b> – Heavy Duty Parallel Arm Stop</li> <li>• <b>RA</b> – Regular Arm</li> <li>• <b>SCS/SCSHO</b> – Heavy Duty Parallel Arm Cushion Stop</li> <li>• <b>TA/TAHO</b> – Track Arm</li> <li>• <b>EDA/EDAHO</b> – Extra Duty Parallel Arm</li> <li>• <b>PS</b> – Pivot Stop Arm*</li> </ul>
<b>PISTON:</b>	• Hardened steel, 1-1/2" diameter
<b>ADJUSTMENT:</b>	• Hydraulic controlled closing • Separate hydraulic backcheck standard • Optional delayed action (in addition to backcheck)
<b>SIZE:</b>	• Adjustable 1 through 6
<b>MOUNTING:</b>	<ul style="list-style-type: none"> <li>• Tri-packed for regular, top jamb and parallel arm installations</li> <li>• Includes sex nuts/bolts and screws for wood/metal doors/frames</li> <li>• Self drilling, self tapping screws standard</li> <li>• Separate limiting stop may be required for high abuse application</li> </ul>
<b>COVER:</b>	• Full plastic cover standard, optional full metal cover available
<b>FINISHES:</b>	• 605 – Polished Brass, 625 – Polished Chrome, 689 – Aluminum, 693 – Black, 695 – Duro Bronze, 696 – Gold
<b>WARRANTY:</b>	• Twenty-five (25) year Limited Warranty
<b>CERTIFICATIONS, LISTINGS, COMPLIANCES:</b>	<ul style="list-style-type: none"> <li>• UL listed for labeled swinging fire doors rated up to and including 3 hours</li> <li>• Certified to ANSI/BHMA A156.4 Grade 1</li> <li>• TAA compliant. Country of origin: KR</li> </ul>

# 3100 Series

# Light Commercial Closer

## GRADE 1

### Economical. Reliable. 25-Year Warranty.

- Multi-function heavy duty parallel arm
- Excellent for aluminum storefront openings
- Great for retrofits. Mounting hole pattern matches Yale 50 and Norton 1600



DOOR SAVER ARM OPTION SHOWN

### Typical Applications

- Aluminum Storefronts
- Assisted Living
- Hospitality
- Interior Offices
- Multi-family

### Features

- Traditional door style door control for use in commercial door applications
- Fasteners are provided to facilitate installation on wood, hollow metal and aluminum doors and frames
- The closers are non-handed and tri-packed for maximum versatility to permit regular, top-jamb and parallel arm installations
- The common 9-1/16" mounting hole pattern permits simple installation on new and retrofit applications.
- Maximum 3-11/16" reveal for Top Jamb.

### Specifications



<b>BODY:</b>	• High strength aluminum alloy
<b>ARM OPTIONS:</b>	<ul style="list-style-type: none"> <li>• <b>PA</b> – Parallel Arm</li> <li>• <b>PS</b> – Pivot Stop Arm</li> <li>• <b>HO</b> – Hold Open</li> <li>• <b>DS/DSHO</b> – Heavy Duty Parallel Arm Stop</li> <li>• <b>RA</b> – Regular Arm</li> <li>• <b>SCS/SCSHO</b> – Heavy Duty Parallel Arm Cushion Stop</li> </ul>
<b>ADJUSTMENT:</b>	<ul style="list-style-type: none"> <li>• Separate hydraulic backcheck standard</li> <li>• Hydraulic controlled closing standard</li> </ul>
<b>SIZE:</b>	<ul style="list-style-type: none"> <li>• 3101 = Adjustable  BF - 4</li> <li>• 3100 = Adjustable 3 - 6</li> </ul>
<b>MOUNTING:</b>	<ul style="list-style-type: none"> <li>• Common 9-1/16" x 3/4" mounting hole pattern retrofits Yale® 50, Norton® 1600</li> <li>• Tri-packed for regular, top jamb and parallel arm installations</li> <li>• Includes sex nuts/bolts and screws for wood, metal doors frames</li> <li>• <b>Self drilling self tapping screws standard</b></li> <li>• Separate limiting stop may be required for high abuse applications</li> </ul>
<b>COVER:</b>	• Streamline plastic cover optional
<b>FINISHES:</b>	• 689 – Aluminum, 693 – Black, 695 – Duro Bronze, 696 – Gold
<b>WARRANTY:</b>	• Twenty-five (25) year Limited Warranty
<b>CERTIFICATIONS, LISTINGS, COMPLIANCES:</b>	<ul style="list-style-type: none"> <li>• UL listed for labeled swinging fire doors rated up to and including 3 hours</li> <li>• Certified to ANSI/BHMA A156.4 Grade 1</li> <li>• Complies with ADA (Americans with Disabilities Act) and ICC/ANSI 117.1 for Accessible and Usable Buildings</li> <li>• TAA compliant. Country of origin: KR</li> </ul>

## Reduce Door Wear and Tear

- Unique self-aligning screws
- Manufactured from anti-corrosive stainless steel
- Two spring strengths. Specific designs for 3' and 4' door.



605  
Bright Brass



613E  
Dark Oxidized Satin  
Bronze (Equivalent)



630  
Satin Stainless Steel



693  
Black

PDQ's SCS Series Spring Cushion Stop helps reduce wear and tear on the opening. As the door begins moving through backcheck to its maximum opening angle, the stop acts as a shock absorber, dampening the impact forces.

## Features

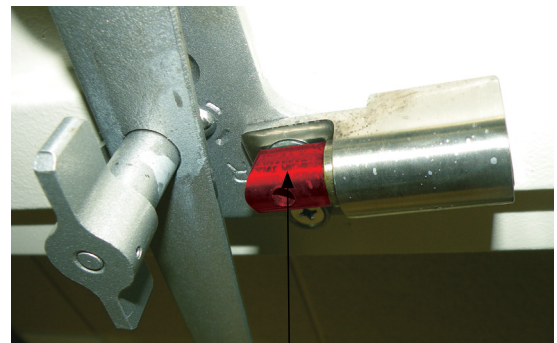
- The unit is an **add-on kit** that can be included as an option on DS/DSHO arms.
- It also can be installed on existing DS/DSHO arm applications using the existing threaded hole for the bumper stop and one of the mounting screw holes.
- The spring cushion kit is available in two spring sizes, allowing it to be tailored to provide more effective cushioning for specific door widths
- Designed to be self aligning, the unit works with any door that incorporates a PDQ DS/DSHO arm with a cushioned bumper (won't fit with old style metal bumper).
- Manufactured from investment cast stainless steel for corrosion resistance and durability
- The 99032/99033 does not alter or decrease the strength of the DS/DSHO arm.
- Hand is determined in the field and reversible for LH and RH doors

## Specifications

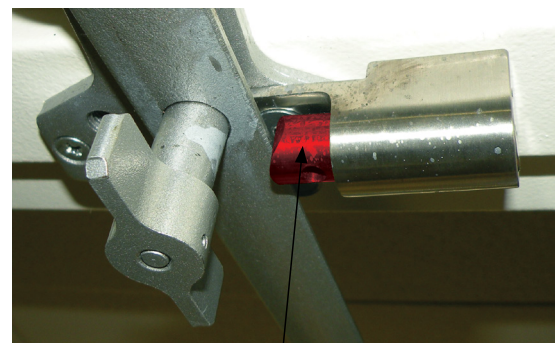
<b>HANDING:</b>	• Field Reversible
<b>DOOR SIZES:</b>	• SCS-1 for 3'0" X 8'0" doors • SCS-2 for 4'0" X 8'0" doors
<b>FINISHES:</b>	• 605 (US3) – Bright Brass (PVD), 613E – Dark Oxidized Satin Bronze (Equivalent), 630 (US32D) – Satin Stainless Steel, 693 – Black Note: PVD (Physical Vapor Deposition) coated finishes offer outstanding resistance to wear, durability and corrosion



Note: Plunger Shown in Red To Enhance the Cushioning Feature.



Stop Shown Before Door is Fully Opened



Stop Shown When Door is Fully Opened

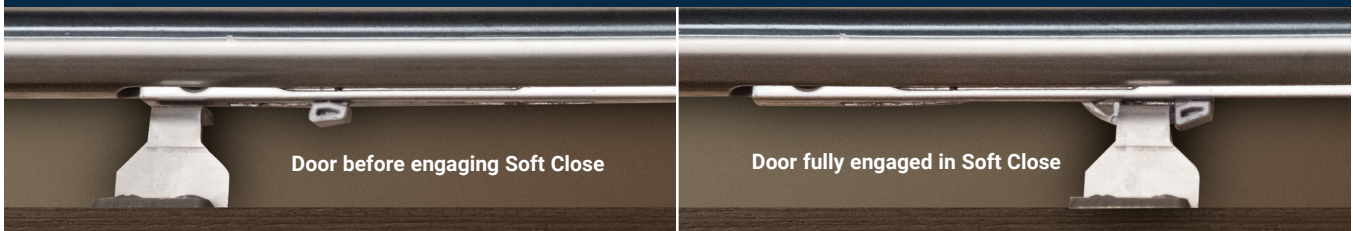


## Modern Styling. Space Saving. Hilton Hotels Approved.

PDQ's stainless steel sliding track systems, also referred to as Barn Door Hardware, offer the ideal solution when modern styling and space saving is demanded. Perfect for hospitality, offices, multi-family or mixed used facilities.



**Standard** Complies with Hilton Hotel Design Guide for Hampton Inns.



**Soft Close** Upgrade to PDQ's innovative WALLSAVER™ Soft Close, designed to gently bring the door to the stopped position. When the door is set in motion then captured by Soft Close, the dampened closing cycle minimizes the effect of impact loading to the wall brackets. The sleek design of the Soft Close mechanism is integrated into the track and replaces the need for rigid stops. Soft Close also maintains the door in the stopped position, preventing unwanted door creep.

### Features:

- Door type: Wood, 1-3/4" thick.
- Max door weight: 220 lbs
- Grade 304 Stainless Steel components
- Nylon coated rollers
- Finish: 630 Satin Stainless Steel

### Specifications

<b>CONFIGURATIONS:</b>	<ul style="list-style-type: none"> <li>• Single</li> <li>• Bi-parting</li> </ul>
<b>INSTALLATION:</b>	<ul style="list-style-type: none"> <li>• Side Wall Mount (only)</li> </ul>
<b>PERFORMANCE:</b>	<ul style="list-style-type: none"> <li>• Meets ANSI/BHMA 156.14 Grade 1 Standard (100,000 cycles)</li> </ul>
<b>STANDARD KIT INCLUDES:</b>	<ul style="list-style-type: none"> <li>• 1 ea Track (specify length)</li> <li>• 2 ea Wall Brackets</li> <li>• 2 ea Track Stops</li> <li>• 2 ea Top Mount Hangers with Anti-jump pins</li> <li>• 1 ea Wood Guide</li> <li>• Installation fasteners</li> </ul>





## Full Mortise Hinges – Standard and Heavy Duty Spring Hinges



Plain Bearing  
Standard Weight



2 Ball Bearing  
Standard Weight



4 Ball Bearing  
Heavy Weight



Spring Hinge  
Standard Weight

### Features

**NON-REMOVABLE PIN (NRP):**

- Included with all 2 and 4 ball bearing, std and heavy weight hinges.
- Groove in pin accepts set screw in center barrel.
- Set screw secured using a 3/32" hex (allen) wrench and is not accessible when door is closed.

**TYPE:**

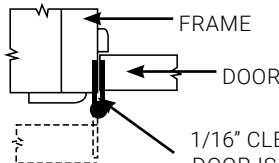
- Full Mortise. Hinge leaves are mortised into the door and frame.

**SWAGED:**

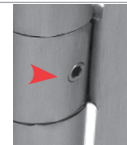
- Standard.
- Provides 1/16" of clearance between both leaves when the hinge is in the closed position.



Power Transfer  
Standard or  
Heavy Weight



1/16" CLEARANCE WHEN DOOR IS IN THE CLOSED POSITION.



Non-Removable Pin  
(Red Arrow)

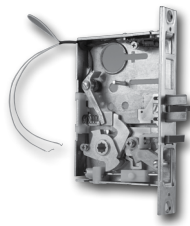


### Specifications

<b>MATERIALS:</b>	<ul style="list-style-type: none"> <li>• <b>STEEL</b> – Applications: Interior doors, non-corrosive environments.</li> <li>• <b>STAINLESS STEEL</b> – Applications: Exterior, doors, corrosive environments</li> </ul>
<b>PACKAGING:</b>	<ul style="list-style-type: none"> <li>• Qty Of Hinges Per Individual Carton: 3 ea For Plain, 2 Ball Bearing and 4 Ball Bearing Hinges 3 ea For Spring Hinges 1 ea for Electrified Hinges</li> <li>• Qty Of Hinges Per Master Carton: 48 ea For Plain, 2 Ball Bearing and 24 Ball Bearing Hinges</li> </ul>
<b>FASTENERS:</b>	<ul style="list-style-type: none"> <li>• All hinges packed with Machine Screws (12-24 x 1/2" FHMS) and Wood Screws (12 x 1-1/4" FHWS)</li> </ul>
<b>CERTIFICATIONS, LISTINGS, COMPLIANCES:</b>	<ul style="list-style-type: none"> <li>• Conforms with the requirements of NFPA 80-2010, Section 6.4.3.1.</li> <li>• Certified to ANSI/BHMA A156.1-2013: <ul style="list-style-type: none"> <li>– Grade 3, Plain Bearing (PL) 350,000 cycles</li> <li>– Electrified hinges tested to over 100,000 cycles</li> </ul> </li> <li>• UL listed: <ul style="list-style-type: none"> <li>– SH Series Spring Hinges</li> <li>– EL Series Electrified Hinges</li> </ul> </li> </ul>
<b>WARRANTY:</b>	<ul style="list-style-type: none"> <li>• Five (5) year limited warranty</li> </ul>

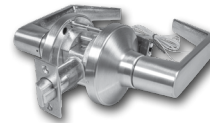
## Locks

### MR199A Electrified Mortise



**Applications**  
Electrified locks complement the mechanical offering and are typically incorporated into a wired access control system or used independently with a remote access switch. - p. 8

### XGT/GT199A Electrified Cylindrical



**Applications**  
Electrified locks complement the mechanical offering and are typically incorporated into a wired access control system or used independently with a remote access switch. - p. 13

## Exit Devices and Trim

### 6300/6400 Electrified Options



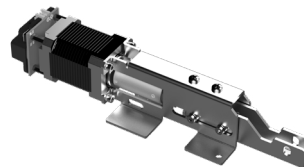
**Applications**  
Access control exit device options including request to exit signal switch, latch bolt monitor, and battery powered alarms. — p. 49

### 6W99 Electrified Trim



**Applications**  
Electrified trim complements the mechanical offering and is typically incorporated into a wired access control system or used independently with a remote access switch. — p. 49

### MLR Motorized Latch Retraction



**Applications**  
An ideal solution for integrated exit device access control solutions requiring operational noise reduction such as Healthcare, K-12, higher education, museums, auditoriums, theaters, etc. — p. 49

### DE Delayed Egress



**Applications**  
This Delayed Egress exit device is designed to slow the egress or exit from a particular area, usually for security reasons or to prevent unauthorized access. Designed for the 6300 and 6400 exit device. Available in Rim, concealed vertical rod, and mortise devices. — p. 52

---

## Electrified Hinges



### Applications

Electric hinges are used when a locking device is mounted on a moving door and power and signals must be brought off the door to the controller and house wiring. Examples of such locking devices include an electrified lockset or electrically actuated trim, electric latch retraction device or a switching device such as a REX lever or touchbar. — p. 68

---

## Electric Strikes



### Applications

Electromechanical door locking device for use with various latch bolt locksets in lieu of conventional Strikes that provide additional security, traffic control and convenience of remote operation. — p. 69

---

## Key Switches



### Applications

Key switches can be activated only by the use of a key. Typical applications include situations where access needs to be restricted to the switch's functions. — p. 68

---

## Push Buttons

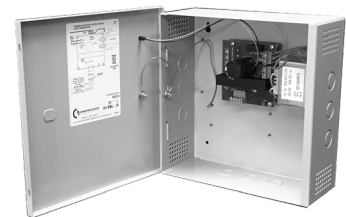


### Applications

Commonly used on ADA openings in conjunction with an automatic operator. — p. 68

---

## Power Supplies




### Applications

Power sources used to support electronic access control devices. — p. 72

## Electrified Hinges



### Electrified Hinges

FEATURES	QTY OF HINGES PER CARTON	CODE	DESCRIPTION
	1ea	EL 4	Concealed electric through-wire (2 wires @ 20ga, 2 wires @ 26ga)
		EL 8	Concealed electric through-wire (8 wires, 28ga)

## Key Switches



• Maintained or Momentary
• Can be Keyed Into Master Key System
• Stainless Steel Faceplate
• Indicators Available

## Push Buttons



• Maintained or Momentary
• Stainless Steel Faceplate



# 8500/9910 Series Electric Strikes

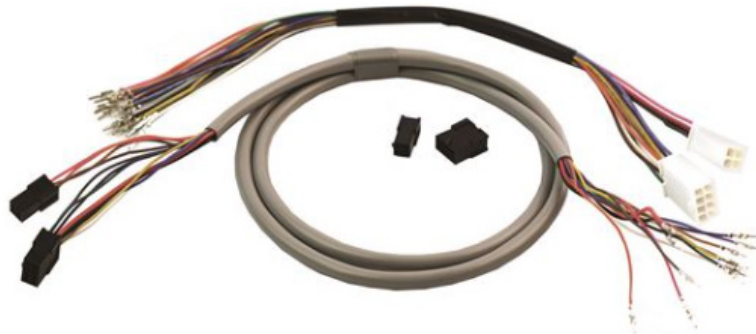


## Specifications for 85001 and 85003

<b>85001 ELECTRIC STRIKE:</b>	• Designed for use with all PDQ Grade 1 and Grade 2 Cylindrical Locks
<b>85003 ELECTRIC STRIKE:</b>	• Designed for use with all PDQ MR Series Mortise Locks WITHOUT Deadbolt
<b>FEATURES:</b>	<ul style="list-style-type: none"> <li>• Input voltage:12-24 VDC</li> <li>• Field changeable from FAIL SECURE to FAIL SAFE</li> <li>• Factory tested to 1,000,000 cycle</li> </ul>
<b>CURRENT:</b>	<ul style="list-style-type: none"> <li>• 0.28A @ 12 VDC</li> <li>• 0.14A @ 24 VDC</li> </ul>
<b>FINISH:</b>	• 630 (US32D) Satin Stainless Steel

## Specifications for 9910

<b>9910 ELECTRIC STRIKE:</b>	• Designed for use with all PDQ 6300 / 6400 Rim Exit Devices
<b>FEATURES:</b>	<ul style="list-style-type: none"> <li>• Completely surface-mounted</li> <li>• Accommodates 1/2" to 3/4" (13mm–19mm) latch projection</li> <li>• Mounting spacer included to provide enhanced latch engagement</li> <li>• Stainless steel ensures superior strength and creates a sleek aesthetic design</li> <li>• Horizontal adjustment ensures proper latch positioning to compensate for door misalignment – up to 1/4" (6.4mm)</li> <li>• Conventional keeper design</li> <li>• Plug-in wire connectors</li> <li>• Lockdown holes for secure mount</li> <li>• HEX socket head cap screws for added support</li> <li>• Installation tool included</li> <li>• Non-handed</li> </ul>
<b>CERTIFICATIONS, LISTINGS, COMPLIANCES:</b>	<ul style="list-style-type: none"> <li>• 1,500lbf Static</li> <li>• 70 ft-lb Dynamic</li> <li>• 250,000 Cycles</li> <li>• Fail-Secure</li> <li>• 3-Hour Fire Rated</li> </ul>
<b>CURRENT:</b>	• 500mA Field-Selectable 12/24VDC & 12-24VAC (Max at 12VDC)
<b>WARRANTY:</b>	• 5 Year Limited Warranty
<b>FINISH:</b>	• 630 (US32D) Satin Stainless Steel

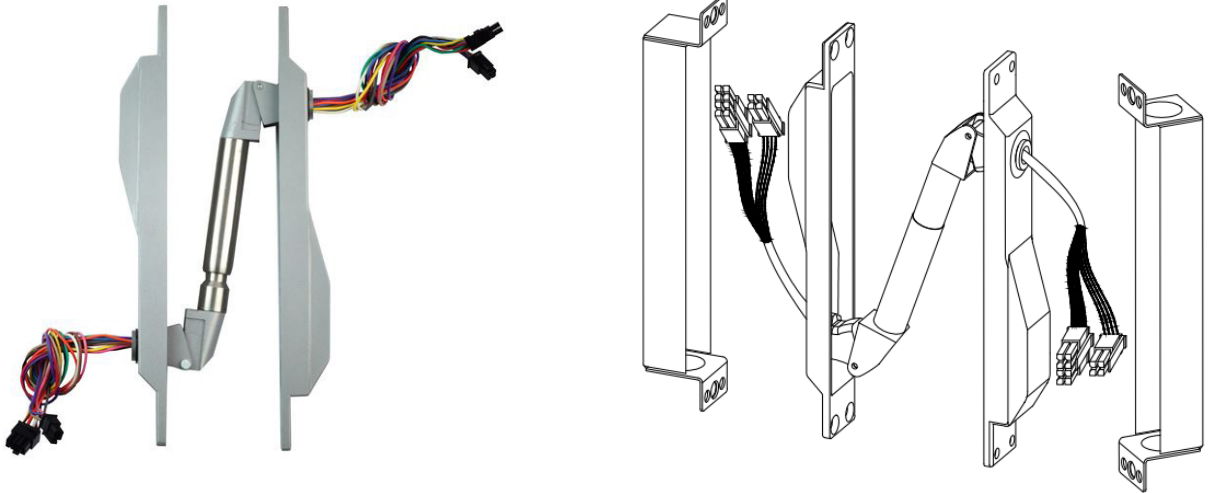


## Specifications

**FEATURES:**

- Molex Connector on one end with other end pinned (ASSA Configuration)
- Quick and easy installation
- Wires are coordinated to work with other PDQ electro-mechanical hardware products
- Easy disconnect to allow fast and safe maintenance on products

MODEL NUMBERS:	FEATURES:
ISMC - 6	6" Wire Harness
ISMC - 38	38" Wire Harness
ISMC - 44	44" Wire Harness
ISMC - 50	50" Wire Harness
ISMC - 192	192" Wire Harness

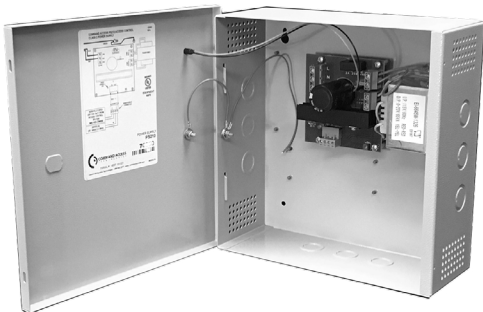


### Specifications



<b>MODEL NUMBERS:</b>	<ul style="list-style-type: none"> <li>• EPT100 - ISMC US28</li> <li>• EPT100 - ISMC S4</li> </ul>
<b>FEATURES:</b>	<ul style="list-style-type: none"> <li>• (12) 24 AWG wires with Industry Standard Molex Connectors (ISMC)</li> <li>• Max Rating: 24 VDC, 1A</li> <li>• Mortises into door and frame and is completely concealed when door is closed</li> <li>• UL / ULC Listed for fire doors</li> </ul>
<b>FINISHES:</b>	<ul style="list-style-type: none"> <li>• US28 (628) - Satin Aluminum</li> <li>• S4 (693) - Black Painted</li> </ul>

## PS SERIES



**PS220**

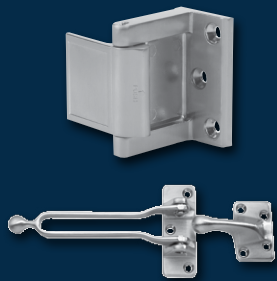
### Features

- Filtered/Regulated 24 Volts DC
- Overload, Over Voltage and Short Circuit Protection
- Accepts 120VAC
- Controls Fail Safe or Fail Secure Locking Devices
- interface Relay Isolates Locking Device Current from Control Switch
- Auxiliary 24VDC Constant Voltage Output for Powering Stand Alone Devices, Such as, Keypads, Motion Detectors and Status Indicators (Model PS220B only)
- Surge Suppression on Fail Safe and Fail Secure Outputs
- UL Listed and Tested to 294 Standard for Access Control System Units
- 3 year warranty
- BAA Compliant



PART	DESCRIPTION
PS220	2A @ 24VDC Power Supply w/ Fire Alarm Link and 0.5A auxiliary power (continuous)
PS220B	2A @ 24VDC Power Supply w/ Fire Alarm Link, 0.5A auxiliary power (continuous) and Battery Backup (batteries sold separately)
PS440B	4A @ 24VDC Power Supply w/ Fire Alarm Link, and Battery Backup (batteries sold separately)
PS480B	8A @ 24VDC Power Supply w/ Fire Alarm Link, and Battery Backup. Batteries not included (accommodates 2 ea. 7AH batteries)

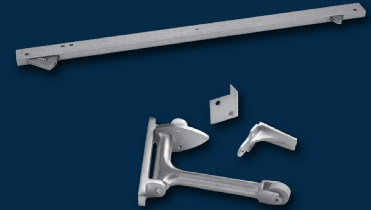




**Privacy Latch Guards**



**Flush and Surface Bolts**



**Coordinators**



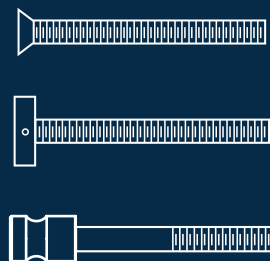
**Push Plates**



**Pulls and Pull Plates**



**Push and Push-Pull Bars**



**Fasteners**



**Door Protection Plates**



**Wall Stops  
and Holders**



**Floor Stops  
and Holders**



**Kick Down  
Door Holders**



**Hinge Stops**



**Roller Stops**



**Roller Latches,  
Catches and  
Protectors**



**Door Viewers,  
Silencers**

# SKILCRAFT®/PDQ Hardware Assembled by the Blind

PDQ is proud to be partnered with CABVI under the US AbilityOne program

This partnership facilitates the employment of people who are blind or have significant other disabilities in the production of ANSI/BHMA Grade 1 door hardware. Under the SKILCRAFT® brand, blind and visually impaired US citizens assemble door hardware using PDQ components for use by all federal government agencies.

## Federal Law Requires the Use of SKILCRAFT®/PDQ Hardware Products on Federally Funded Projects

- Federal Law (Javits -Wagner-O'Day Act 41 U.S.C. & et seq) requires all Federal Agencies to purchase Supplies and Services from nonprofits who employ people who are blind or have significant other disabilities.
- Compliance with FAR 52 208-9 – Contractor Use of Mandatory Sources of Supply and Services means SKILCRAFT®/PDQ hardware products designated as mandatory use items are specified for new construction/major renovations and maintenance of all federally funded buildings.
- Only AbilityOne hardware products which carry the SKILCRAFT®/PDQ cobrand can be used on federally funded projects and have no equal for federal procurement and no substitutions allowed.



## SKILCRAFT® / PDQ Door Hardware

ANSI/BHMA  
Grade 1



Mortise Locks



Cylindrical Locks



Door Closers



Exit Devices

For more information, contact SKILCRAFT® / PDQ® or visit [www.pdqlocks.com/federal-government](http://www.pdqlocks.com/federal-government)

## PDQ Manufacturing Limited Warranty

Grade 1 Lock Product	
MR Series Mortise Locks	Lifetime Warranty
XGT Series	Lifetime Warranty
GT Series	25-Year Warranty
SX Series	5-Year Warranty
Grade 2 Lock Product	
GP Series	8-Year Warranty
SD Series	5-Year Warranty
SF Series	3-Year Warranty
SV Series	1-Year Warranty
CL Series	2-Year Warranty
TJ Series Decorative Tubular	
TJ Series	5-Year Warranty
Deadbolts	
K Series	1-Year Warranty
Closers	
3100 Series	25-Year Warranty
5100 Series	25-Year Warranty
5300 Series	25-Year Warranty
5500 Series	25-Year Warranty
7100 Series	25-Year Warranty
Exit Devices	
4200 Series	5-Year Warranty
6300 Series	10-Year Warranty
6400 Series	10-Year Warranty
Mullions	
Mullions	10-Year Warranty
Hinges, Flat Goods and Sliding Barn Door Hardware	
Commercial Hinges	5-Year Warranty
Flat Goods	5-Year Warranty
Sliding Barn Door Hardware	5-Year Warranty
Electrified Products	
Mechanical Components	Series Warranty
Electric Components	2-Year Warranty

PDQ Manufacturing ("PDQ") warrants that, during the applicable warranty period set forth in the chart to the left, its products will be free from defects in workmanship and materials under normal use and service conditions. If a product or a component part thereof is found to be defective, PDQ will, at its sole discretion, either repair or replace such defective item. If PDQ no longer manufactures the particular product or component, PDQ reserves the right to substitute an item which PDQ deems to be comparable or superior in its place.

A warranty claim must be initiated by calling PDQ's toll-free number at 800.441.9692. A brief description of the defect will be required, and further instructions for returning the product will be given. The provision of return instructions is not a guarantee that the product will be covered under this warranty.

This warranty does not cover:

- Defects or damage arising from improper installation; lack of or improper maintenance; improper storage, shipping or handling; corrosion; erosion; ordinary wear and tear; misuse or abuse; or accident.

- Products which have been modified in any way, regardless of whether such modification caused or contributed to the alleged defect.

- The protective coatings and finishes applied to the surface of the product (wear or tarnishing of such finishes is considered "ordinary wear and tear").

- Labor costs, including the costs of removing and reinstalling the product.

- Shipping charges incurred in returning the product to PDQ.










- This Limited Warranty does not apply to ANSI A156.2 Grade 2 Key-In-Lever product installed on Educational Facilities.

All products returned to PDQ will be inspected to verify that (1) the alleged defect does exist, and (2) none of the exclusionary conditions listed above (abuse, corrosion, modification, etc.) is present. Products deemed not to be "in warranty" will be returned to the customer at the customer's expense.

This warranty is exclusive and in lieu of all other warranties, express and implied, including the implied warranties of merchantability and fitness for a particular purpose.

PDQ's maximum liability hereunder is limited to the original purchase price of the product.

PDQ shall not be liable for any incidental, consequential, indirect, special, exemplary or punitive damages, whether based on contract, warranty, tort (including strict liability and negligence), patent infringement or any other theory of liability, even if advised of the possibility of such damage. No agent, sales representative or dealer has the authority to increase or alter PDQ's obligations under this warranty.

LEVER	MORTISE		CYLINDRICAL			TUBULAR	BALL KNOB	EXIT DEVICE TRIMS
	F-TRIM	J-TRIM	GRADE 1	GRADE 2	INTERCONNECTED			
 Philadelphia- PHL	MR F-Trim	MR J-Trim	XGT, GT	GP, SD, SF	CL	TJ		6N, 6NM, 6W, 6WM, 6S
 Boston- BSN	MR F-Trim	MR J-Trim	XGT, GT	GP, SD, SF	CL	TJ		6N, 6NM, 6W, 6WM, 6S
 Miami- MIA	MR F-Trim	MR J-Trim	XGT, GT	GP, SD, SF	CL	TJ		6N, 6NM, 6W, 6WM, 6S
 Chicago- CHI		MR J-Trim				TJ		6N, 6NM, 6W, 6WM
 Dallas- DAL		MR J-Trim				TJ		
 Houston- HOU		MR J-Trim				TJ		
 Memphis- MEM*		MR J-Trim		SD, SF	CL	TJ		
 Orlando- ORL		MR J-Trim		SD, SF	CL	TJ		6N, 6NM, 6W, 6WM
 Los Angeles - LAX		MR J-Trim				TJ		6N, 6NM, 6W, 6WM
 Ball-Knob		MR J-Trim				TJ	SX, SV	

\* specify handing

## Architectural



605 (US3)  
Bright Brass



606 (US4)  
Satin Brass



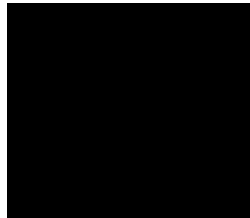
612 (US10)  
Satin Bronze



613E  
Dark Oxidized  
Satin Bronze  
(Equivalent)



619 (US15)  
Satin Nickel



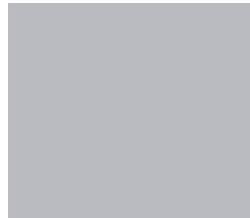
622 (US19)  
Flat Black



625 (US26)  
Bright Chromium



626 (US26D)  
Satin Chromium



628 (US28)  
Satin Aluminum



629 (US32)  
Bright Stainless  
Steel

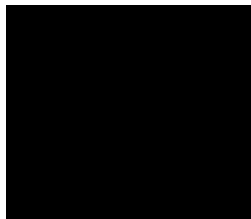


630 (US32D)  
Satin Stainless  
Steel

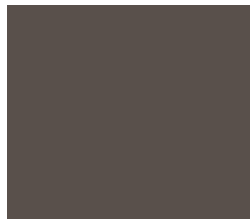
## Painted



689 (US28)  
Aluminum



693 Black



695  
Dark Duranodic  
Bronze



696 (US4)  
Satin Brass (Gold)

Finishes shown are representative only. PDQ cannot guarantee that product shipped will match finishes shown.  
Not all products are available in all finishes listed.



# Architectural Finishes by Product Series

FINISH	MORTISE		CYLINDRICAL		
	F-TRIM	J-TRIM	GRADE 1	GRADE 2	INTERCONNECTED
<b>605 (US3) Bright Brass</b>		MR J-Series	XGT, GT	GP, SD, SF	CL
<b>606 (US4) Bright Brass</b>		MR J-Series	XGT, GT	GP	
<b>612 (US10) Stain Bronze</b>		MR J-Series	XGT, GT	GP	
<b>613E Dark Oxidized Satin Bronze (Equivalent)</b>		MR J-Series	XGT, GT	GP, SD, SF	CL
<b>619 (US15) Stain Nickel</b>			XGT, GT	SF	
<b>622 (US19) Flat Black</b>		MR J-Series	XGT, GT	GP, SD, SF	CL
<b>625 (US26) Bright Chromium</b>			XGT, GT	GP, SF	
<b>626 (US26D) Satin Chromium</b>	MR F-Series		XGT, GT	GP, SD, SF	CL
<b>629 (US32) Bright Stainless Steel</b>		MR J-Series			
<b>630 (US32D) Stain Stainless Steel</b>		MR J-Series			



# Architectural Finishes by Product Series

FINISH		BALL KNOB	TUBULAR LOCK	DEADBOLTS	EXIT DEVICES*	DEVICE TRIMS	CLOSERS	HINGES**
<b>605 (US3) Bright Brass</b>		SV	TJ	MJ, KM KT, KV	6300R, 6400R, 6300V, 6400V, 6300C, 6400C, 6300M, 6300D, 4200R, 4200V	6N, 6NM, 6W, 6WM, 6S, 6C, 6CM, 4EN, 4S, 4GW	7100, 5100 5300, 5500	35ST BB 35ST HB 35ST SH
<b>606 (US4) Bright Brass</b>			TJ	MJ, KM KT, KV	6300R, 6400R, 6300V, 6400V, 6300C, 6400C, 6300M, 6300D	6N, 6NM, 6W, 6WM, 6S, 6C, 6CM		
<b>612 (US10) Stain Bronze</b>			TJ	MJ, KT				
<b>613E Dark Oxidized Satin Bronze (Equivalent)</b>		SV	TJ	MJ, KM KT, KV	6300R, 6400R, 6300V, 6400V, 6300C, 6400C, 6300M, 6300D	6N, 6NM, 6W, 6WM, 6T, 6P, 6G, 6GM, 6S, 6C, 6CM, 4EW, 4S, 4K		35ST PL 35ST BB 35ST HB 35ST SH
<b>619 (US15) Stain Nickel</b>			TJ			6C, 6CM		35ST PL 35ST BB 32ST HB 35ST HB 35ST SH
<b>622 (US19) Flat Black</b>			TJ	KM, KV	6300R, 6400R, 6300V, 6400V, 6300C, 6400C, 6300M, 6300D	6N, 6NM, 6W, 6WM, 6T, 6P, 6G, 6GM, 6S, 6C, 6CM		35ST PL 35ST BB 35ST HB 35ST SH 35SS BB
<b>625 (US26) Bright Chromium</b>				KT	6300R, 6400R, 6300V, 6400V, 6300C, 6400C, 6300M, 6300D	6N, 6NM, 6W, 6WM, 6C, 6CM	7100, 5100 5300, 5500	
<b>626 (US26D) Satin Chromium</b>				KM, KT, KV	6300R, 6400R, 6300V, 6400V, 6300C, 6400C, 6300M, 6300D, 4200R, 4200V	6N, 6NM, 6W, 6WM, 6S, 6C, 6CM, 4EW, 4EN, 4S, 4GW		35ST PL 35ST BB 35ST HB 35ST SH 35SS BB
<b>629 (US32) Bright Stainless Steel</b>			TJ	MJ				
<b>630 (US32D) Stain Stainless Steel</b>		SX, SV	TJ	MJ, KM, KV	6300R, 6400R, 6300V, 6400V, 6300C, 6400C, 6300M, 6300D, 4200R, 4200V	6T, 6P, 6G, 6GM, 6S, 4K, 4GW		35SS BB 35SS HB 35SS SH

\*Check specific exit device models for finish availability. 6300 and 6400 exit devices also available in 630F.

\*\*Hinges also available in 600.







# Painted Finishes by Product Series

FINISH		CLOSERS	EXIT DEVICES	
			EXIT DEVICES	TRIMS
<b>689 (US28)</b> Aluminum		7100, 5100, 5300, 5500, 3100	4200R, 4200V	4EN, 4P, 4GW
<b>693</b> Black		7100, 5100, 5300, 5500, 3100		
<b>695</b> Dark Duranodic Bronze		7100, 5100, 5300, 5500, 3100	4200R, 4200V	4EN, 4P, 4GW
<b>696 (US4)</b> Stain Brass (Gold)		7100, 5100, 5300, 5500, 3100	4200R, 4200V	

FINISH	FLAT GOODS	GENERAL HARDWARE
<b>Assorted</b>	See Price Book	



# Customer Training Program

Contact [training@pdqlocks.com](mailto:training@pdqlocks.com) to Schedule Your Virtual Training

<b>Course 1: Construction Basics</b>	General introduction to the construction process and how Division 8 fits into the process. There will be information given on the 6 main phases of construction, floor plans, Master Format, specifications, and construction schedules.	<b>Duration: 30-45 mins</b>
<b>Course 2: Hanging the Door</b>	The first concern in door hardware is getting the door upright and swinging. Information about the various ways to hang a door are included in this segment. There will be information on continuous hinges, door pivots, floor closers, specialty hinges, butt hinges, and electrified hinges.	<b>Duration: 30-45 mins</b>
<b>Course 3: Securing the Door</b>	After the door is swinging successfully the door is generally secured via a latch or locking mechanism. This session reviews all the ways to secure a door including not only traditional locks, but also exit devices, and special scenario locking devices.	<b>Duration: 30-45 mins</b>
<b>Course 4: Electrified Options</b>	Various options for electrified openings are reviewed in this session. This will include standard access control options, as well as more complex applications like Delayed Egress.	<b>Duration: 30-45 mins</b>
<b>Course 5: Control the Door</b>	Once the door is hanging and secured it often needs to be controlled. This lesson will include ways that a door is controlled, which can include the various closer types, coordinators, and auto operators. Even items such as floor stops and wall stops can be considered part of controlling the movement of the door.	<b>Duration: 30-45 mins</b>
<b>Course 6: Protecting the Door</b>	Once the door is operating as intended, the last step is to protect the door so it stays looking and operating as new for as long as possible. Items included in this category can include, kick-plates, push pull plates, silencers, and edge guards among many other items.	<b>Duration: 30-45 mins</b>
<b>Course 7: Keying Basics</b>	How a building is keyed can be critical to the proper functioning of the space as the owner intends. In this section we will review the basics for the mechanics of how a lock is keyed, and also gain a general understanding of masterkeying concepts.	<b>Duration: 30-45 mins</b>
<b>Course 8: PDQ Products</b>	This course explores PDQ products, their features, benefits, and applications, offering practical insights into selecting the right hardware to meet specific needs, ensure compliance, and enhance security.	<b>Duration: 60-90 mins</b>







SECURING  
CONFIDENCE  
**OPENING**  
**POSSIBILITIES**

**Phone:** 717.656.4281

**Tech Support:** 833.273.7832

**Email:** [help@pdqlocks.com](mailto:help@pdqlocks.com)

**Headquarters:** 2230 Embassy Drive, Lancaster, PA 17603  
P.O. Box 6426, Lancaster, PA 17607

**Regional Distribution Centers:** Lancaster, PA | Norcross, GA |  
Auburn, WA