

# 6300V - PANIC & 6300VF - FIRE LABELED - HVHZ, FL40297 SURFACE VERTICAL ROD EXIT DEVICES

TEMPLATE: 639302  
REV. 5 11/21/24

## 6300 SERIES EXIT DEVICES USING SNB OR SURFACE MOUNT FASTENERS

### DEVICE

**MACHINE SCREWS:**  
USE #7 OR 13/64" DRILL AND 1/4-20 TAP

**WOOD SCREWS:**  
USE 5/32" DRILL

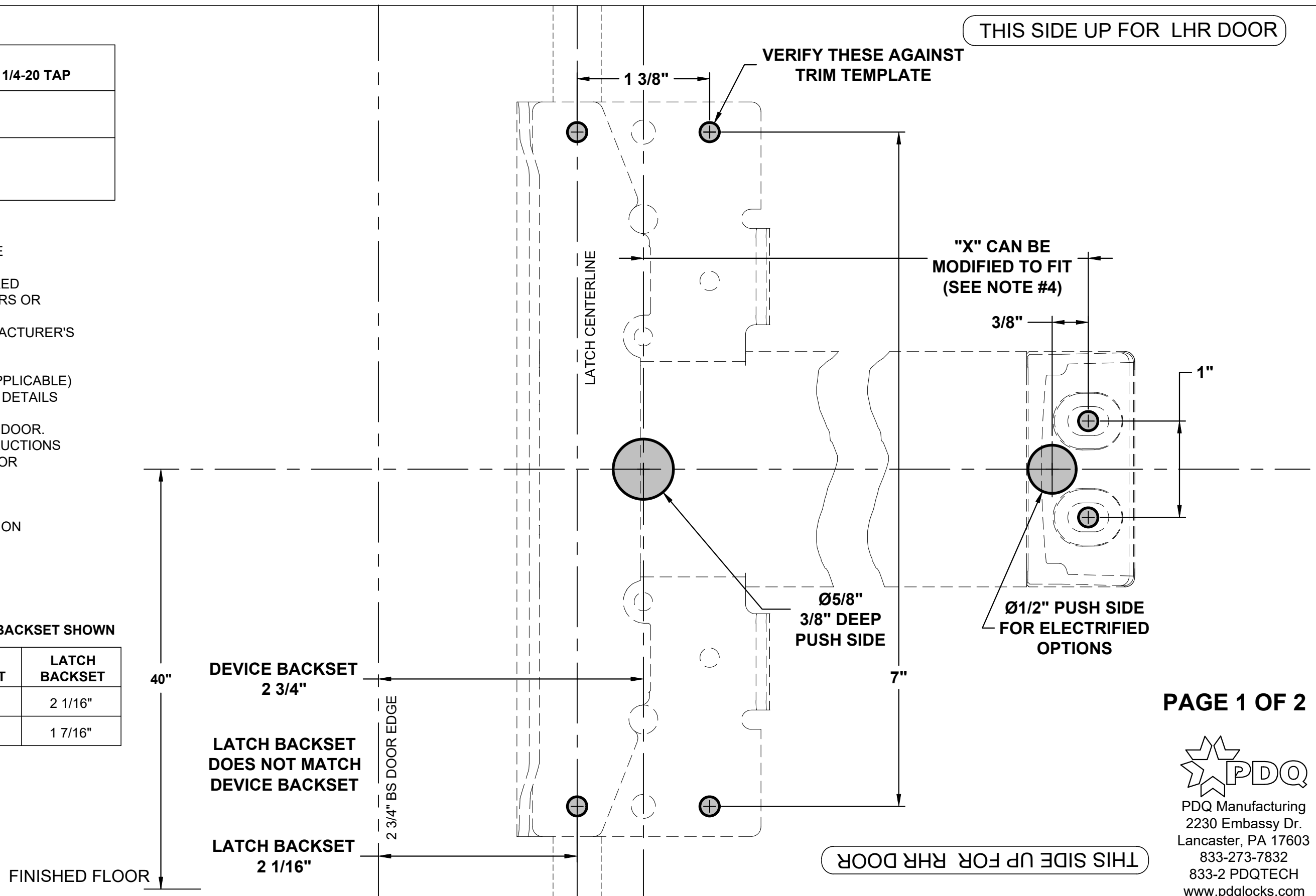
**SEX NUTS:**  
USE 3/8" DRILL PULL SIDE  
USE 9/32" DRILL PUSH SIDE

### NOTES:

1. VERIFY PRINTED TO SCALE
2. SEX NUTS MAY BE REQUIRED FOR UNREINFORCED DOORS OR COMPOSITE FIRE DOORS. CONSULT DOOR MANUFACTURER'S RECOMMENDATIONS
3. SEE TRIM TEMPLATE (IF APPLICABLE) FOR RELATED MACHINING DETAILS
4. DIMENSION "X" SIZED FOR DOOR. REFER TO DEVICE INSTRUCTIONS WHEN CUTTING DOWN FOR NARROWER OPENING
5. CHECK PDQ WEBSITE FOR MOST RECENT REVISION [WWW.PDQLOCKS.COM](http://WWW.PDQLOCKS.COM)

### WOOD/STEEL DOOR 2-3/4" BACKSET SHOWN

MINIMUM STILE WIDTH	DEVICE BACKSET	LATCH BACKSET
4 1/4"	2 3/4"	2 1/16"
3 1/2"	2 1/8"	1 7/16"



PAGE 1 OF 2

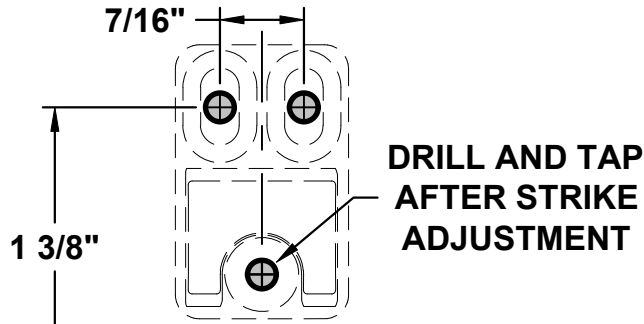


PDQ Manufacturing  
2230 Embassy Dr.  
Lancaster, PA 17603  
833-273-7832  
833-2 PDQTECH  
[www.pdqlocks.com](http://www.pdqlocks.com)

**TOP STRIKE**

MACHINE SCREWS:  
USE #25 OR 5/32" DRILL  
AND #10-24 TAP

FOLD HERE, PLACE  
AGAINST DOOR & STOP



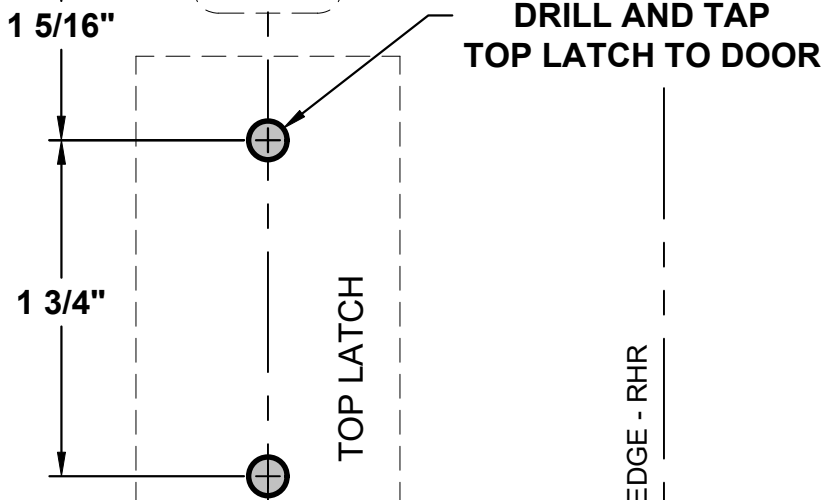
DRILL AND TAP  
AFTER STRIKE  
ADJUSTMENT

**TOP/BOTTOM LATCH TO DOOR**

MACHINE SCREWS:  
USE #7 OR 13/64" DRILL AND 1/4-20 TAP

WOOD SCREWS:  
USE 5/32" DRILL

SEX NUTS:  
USE 3/8" DRILL PULL SIDE  
USE 9/32" DRILL PUSH SIDE



DEVICE BACKSET	LATCH BACKSET
2 3/4"	2 1/16"
2 1/8"	1 7/16"

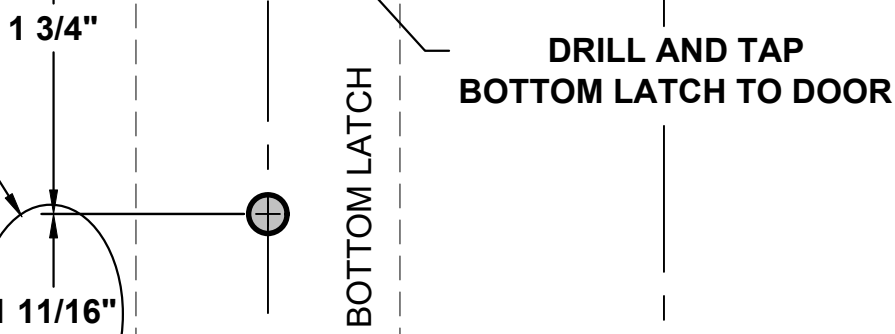
2 3/4" BS DOOR EDGE - LHR

2 3/4" BS DOOR EDGE - RHR

2 1/16" LATCH BACKSET DOES NOT MATCH DEVICE      2 1/16" LATCH BACKET DOES NOT MATCH DEVICE

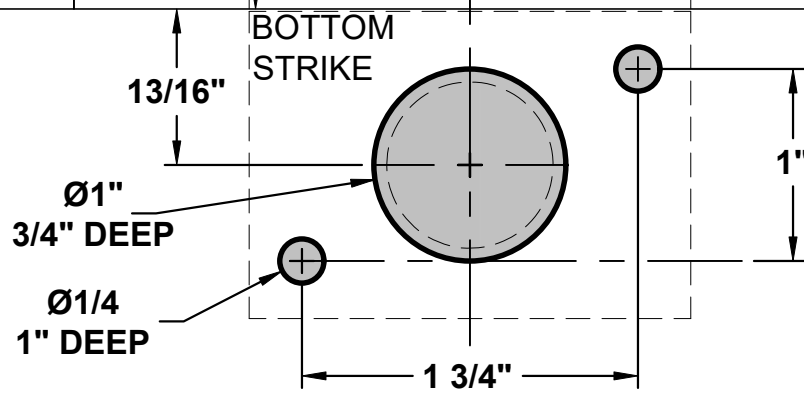
PUSH SIDE FACE OF DOOR

\*\*FOR DOORS WITH 1/2" THRESHOLD,  
MEASURE 1-11/16" TO LOWER LATCH  
MOUNTING HOLE FROM TOP OF  
THRESHOLD, USE UPPER PIN HOLE  
IN BOTTOM ROD TO FASTEN LATCH



BOTTOM EDGE OF DOOR

DOOR EDGE



FINISHED FLOOR  
FOLD HERE, PLACE  
AGAINST FLOOR & DOOR

